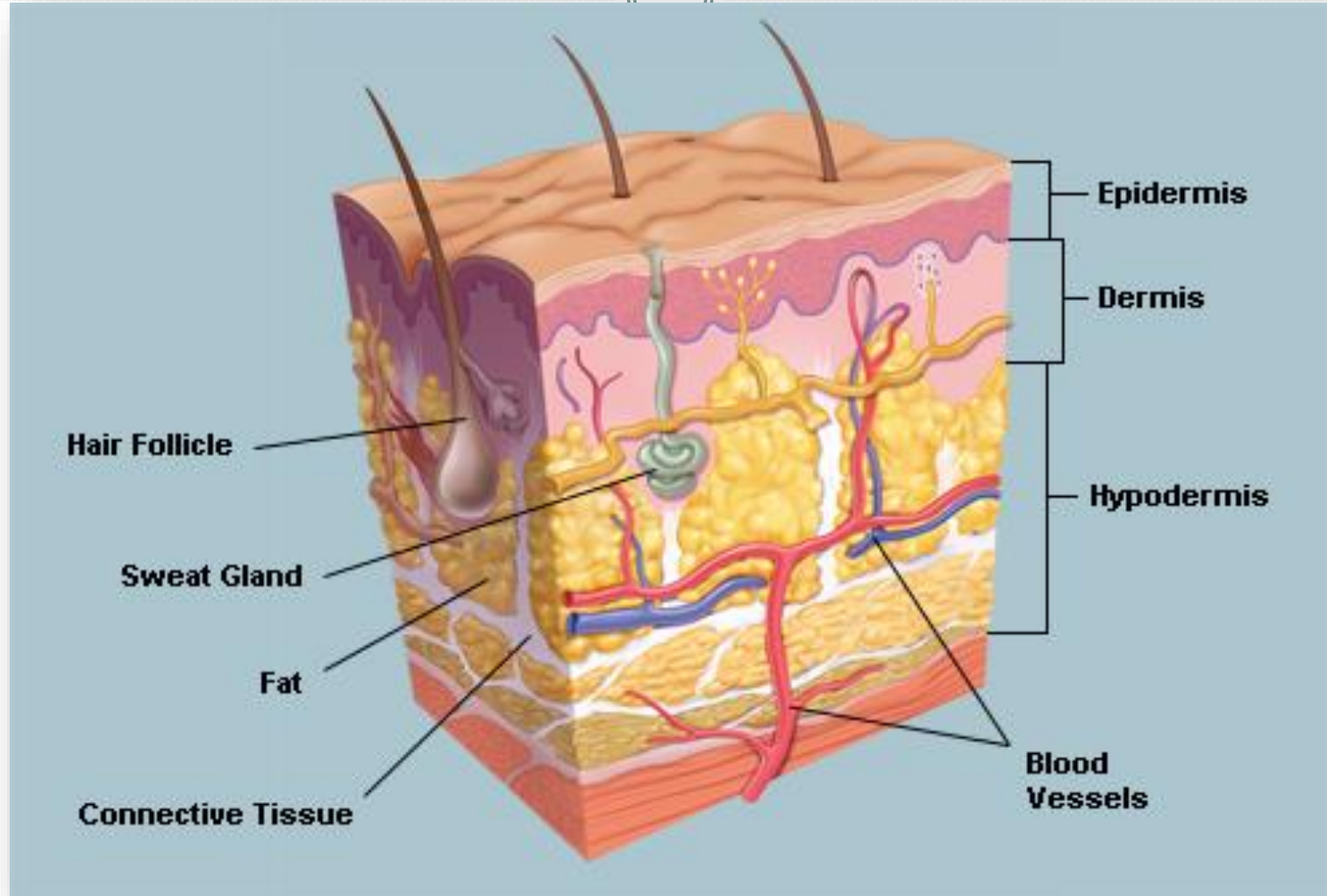


The Integumentary System





Largest organ *of*
the body

also an extension of the
nervous system as it
processes stimuli from
the outside and sends it
to the CNS

Functions - regulate temperature
(thermoregulation), protect the
body, absorption, respiration,
excretion, and vitamin D
synthesis.

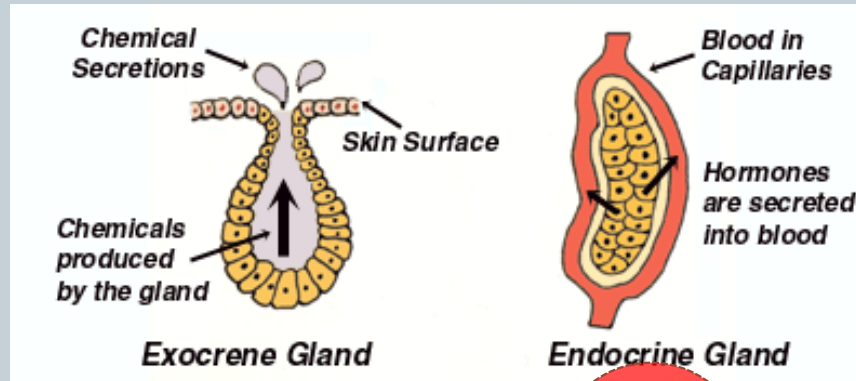
Epidermis, dermis
and subcutaneous
(hypodermis)

The Endocrine System



A SYSTEM OF GLANDS THAT SECRETE ENZYMES AND HORMONES TO REGULATE THE BODY'S HOMEOSTASIS

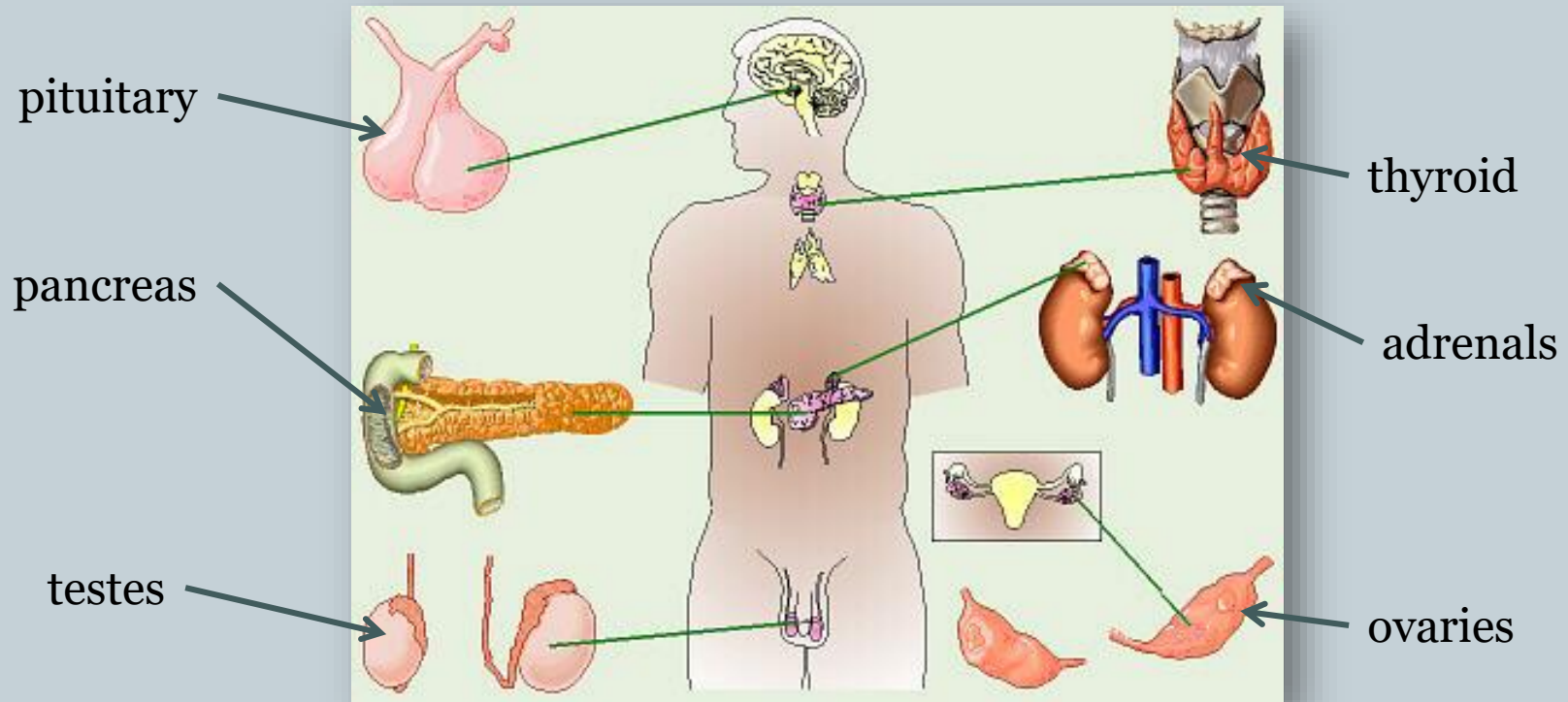
Excretion is a waste product



Secretion is a product used by the body



Examples of **Endocrine** Glands

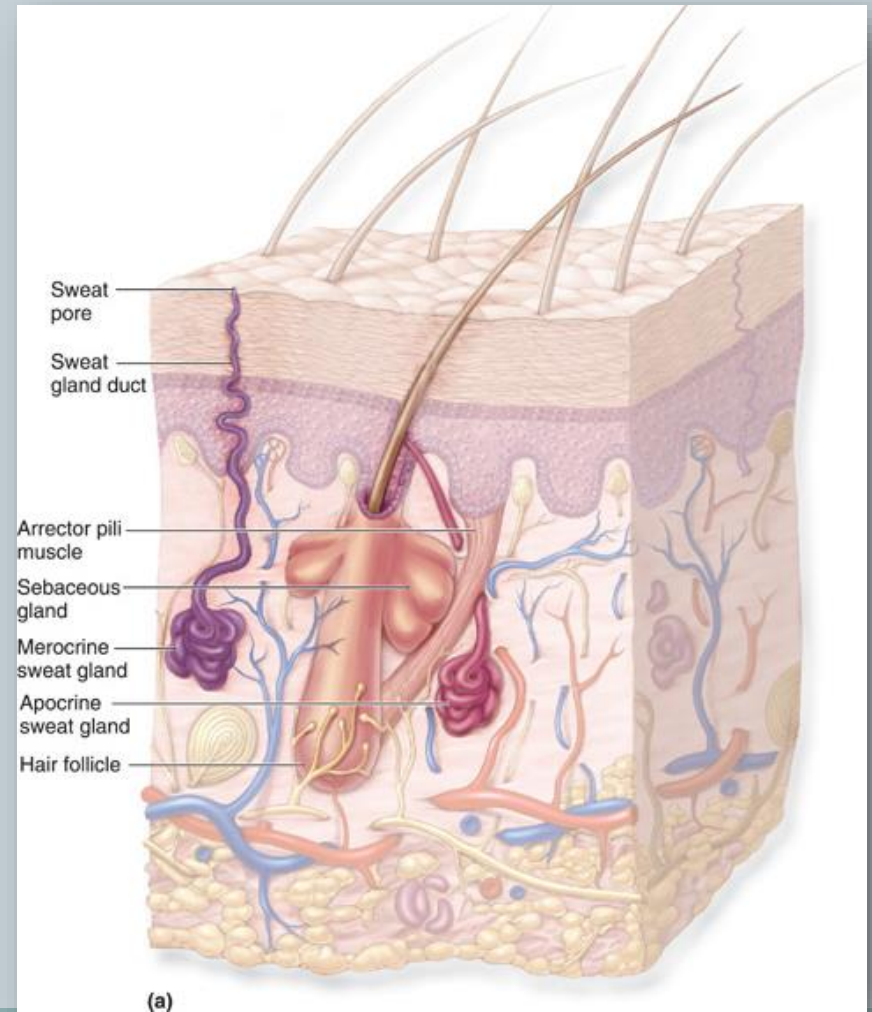


Thymus and pineal are also endocrine. Salivary, sebaceous, sudoriferous, Lacrimal, mucosa and digestive organs are exocrine.

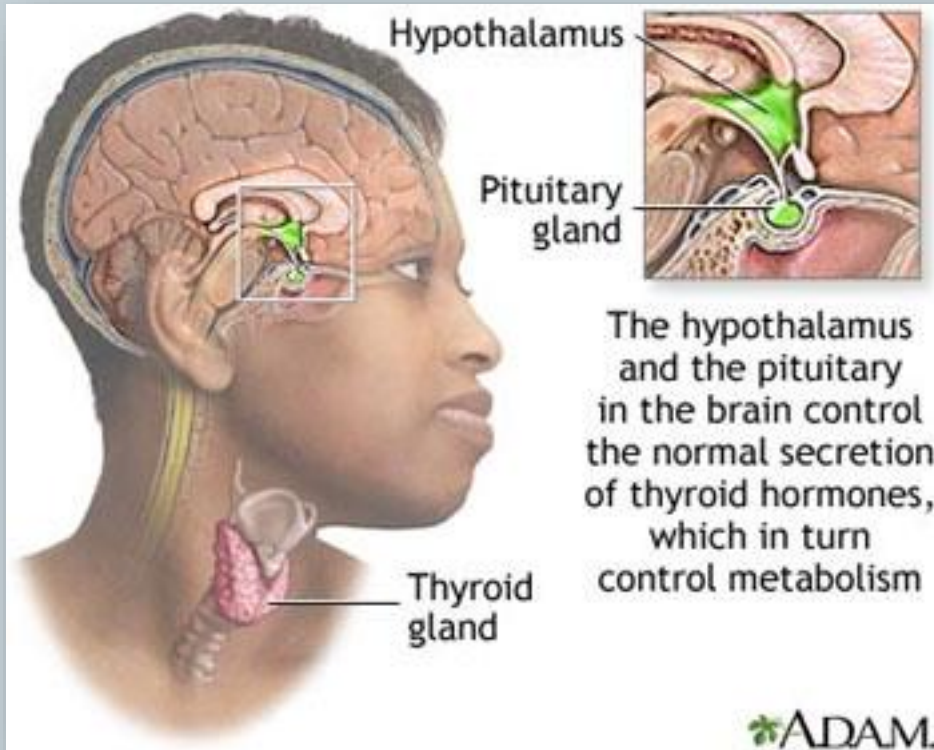
Sebaceous vs. Sudoriferous

Sebaceous = oil

Sudoriferous = sweat



Thyroid gland



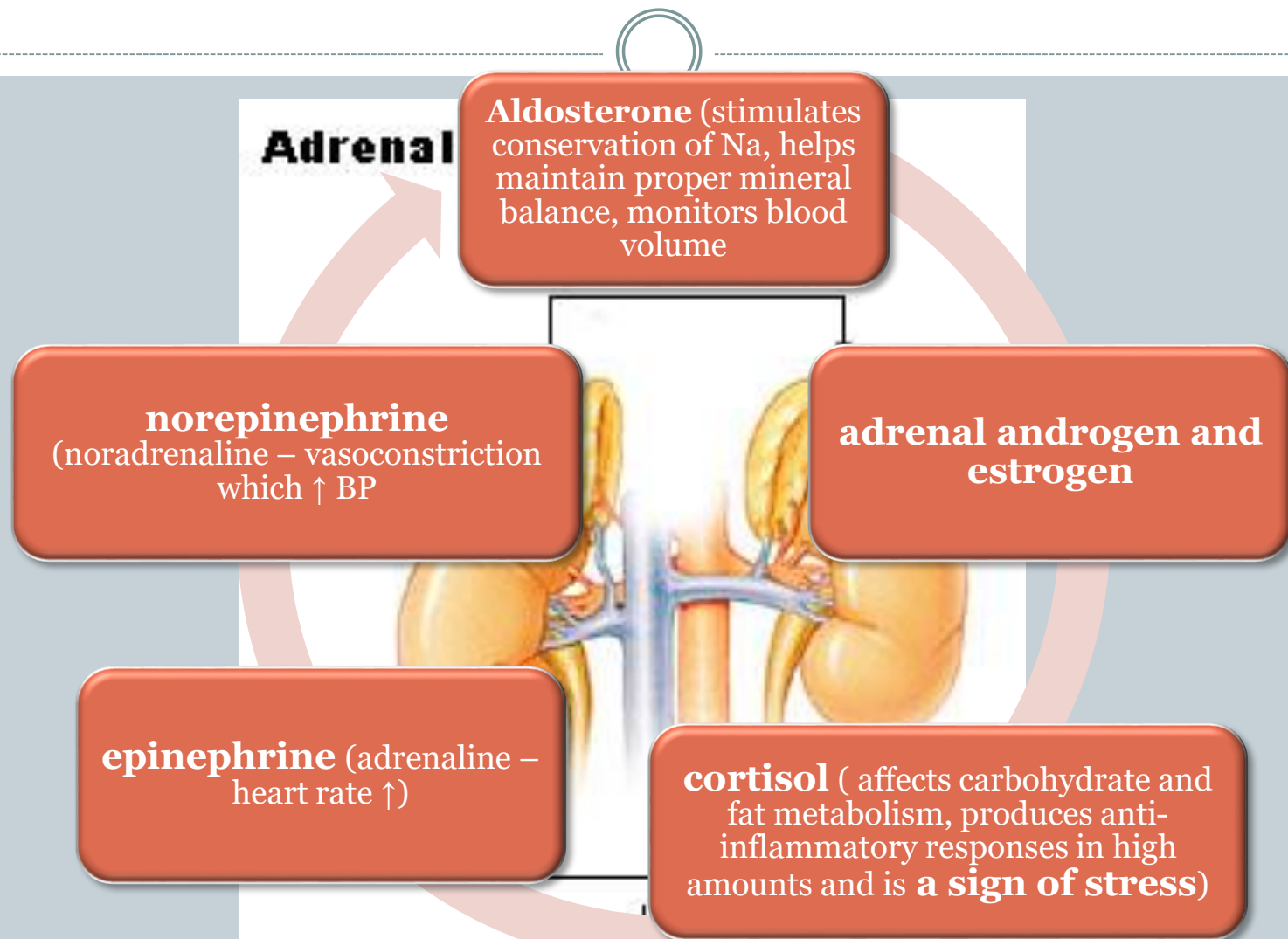
Metabolism - the sum of all chemical processes in the body.

Anabolism is the building up of substances

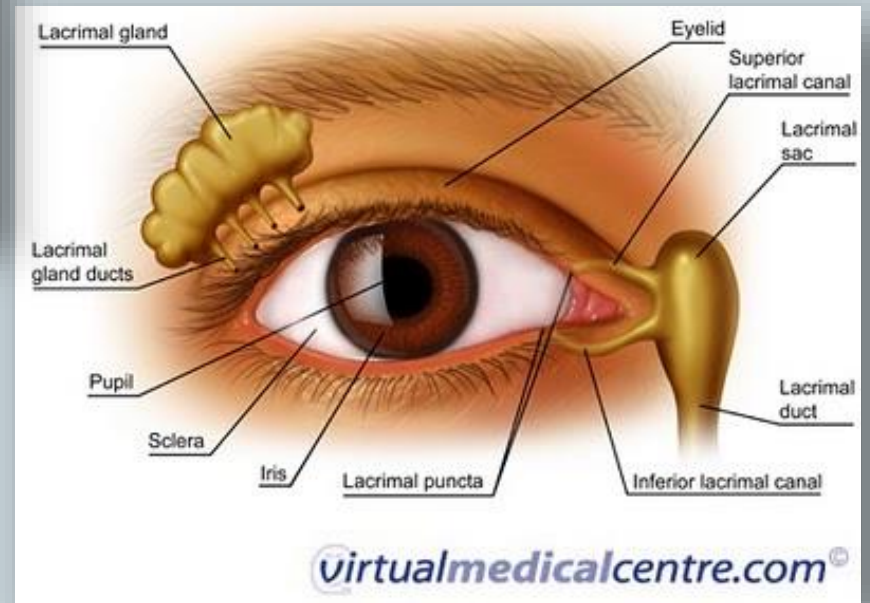
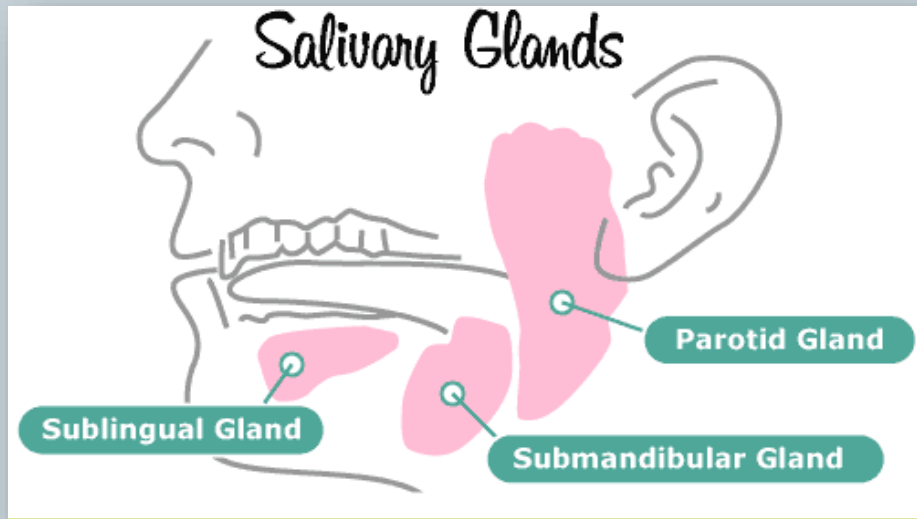
Catabolism is the breakdown of substances

The thyroid also helps to control
The amount of Ca in the blood

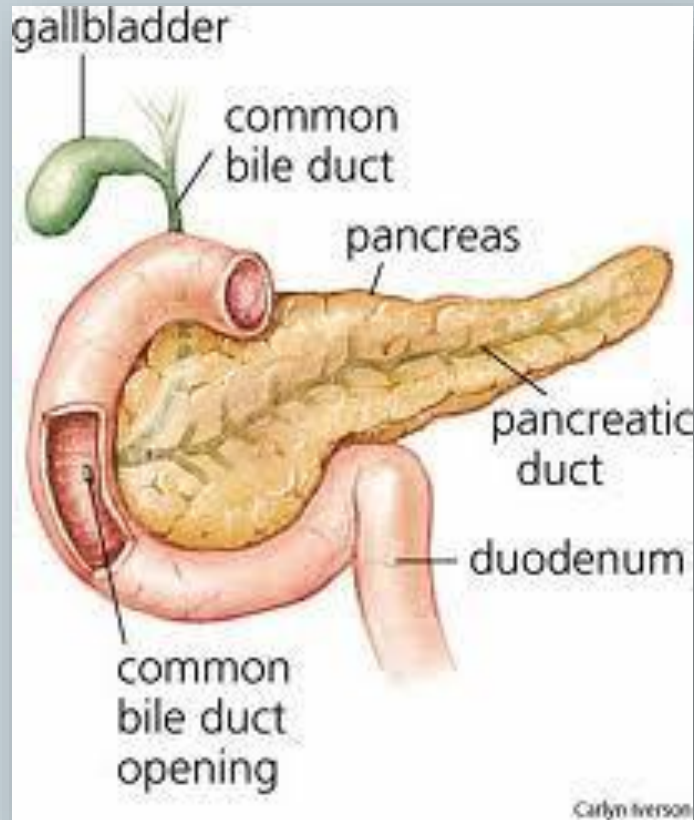
Adrenal Glands



Salivary Glands/Lacrimal Glands



The Pancreas

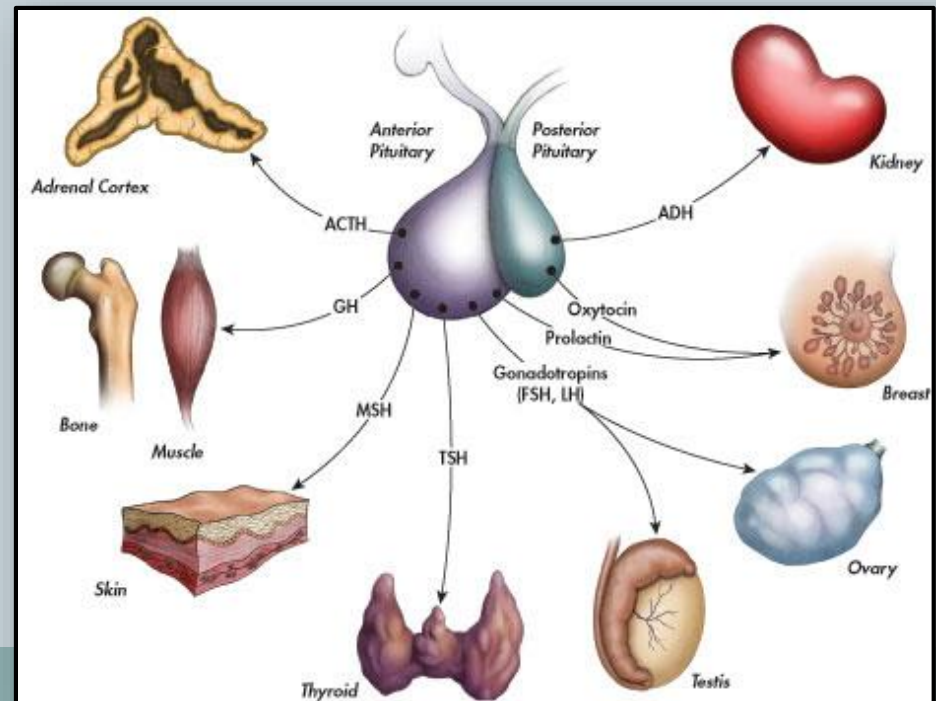
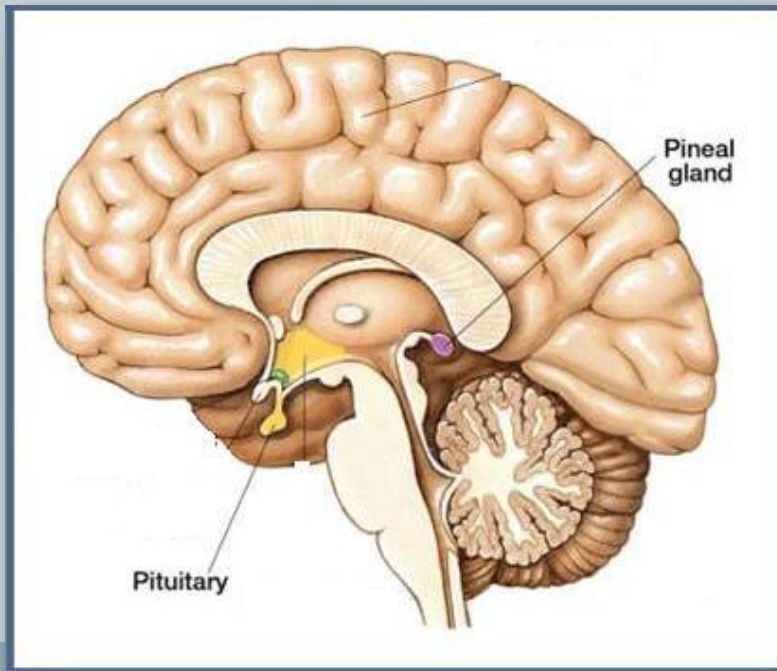


Both endo- and exocrine. Endocrine function is insulin production and glucagon. Exocrine function aids the digestive process

The Pituitary Gland



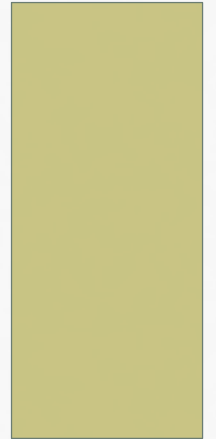
- Once thought of as the **master gland**, it is controlled by the hypothalamus of the brain. The pituitary gland produces **trophic hormones** which tell other glands to turn on and produce their hormones.



Plain & Simple Guide to Therapeutic Massage & Bodywork Examinations

FINAL & MBLX REVIEW

CHAPTER 10: NERVOUS SYSTEM



GENERAL REVIEW

1. The nervous system includes these two separate systems:

- a. The CNS and the PNF
- b. The CVS and the PNS
- c. The CNS and the PNS
- d. The CIS and the PNF

GENERAL REVIEW

2. The autonomic nervous system is part of the _____.

- a. Collating nervous system
- b. Enteric nervous system
- c. Peripheral nervous system
- d. Central nervous system

GENERAL REVIEW

3. The study of the nervous system is called _____.
- a. Nerfology
 - b. Neurology
 - c. Nephrology
 - d. Craniology

GENERAL REVIEW

4. Neurotransmitters are _____.

a. Chemical messengers

b. Short hairs that move the neurons

c. Flagella

d. Prokaryotes

GENERAL REVIEW

5. The two ends of a neuron are called the _____.
- a. Axis and dendrite
 - b. Axon and dentine
 - c. Axon and dendrite
 - d. Axis and glia

GENERAL REVIEW

6. The space between two cells is called the _____.
- a. Borland gap
 - b. Axolemma
 - c. Renshaw opening
 - d. Synapse

GENERAL REVIEW

7. Dopamine is _____.
- a. A chemical neurotransmitter
 - b. A hormone
 - c. Both a neurotransmitter and a hormone
 - d. Neither a neurotransmitter nor a hormone

GENERAL REVIEW

8. The myelin sheath is a layer of _____ surrounding the neuron.

a. Insulation

b. Infiltration

c. Glial cells

d. ATP

GENERAL REVIEW

9. There are two main types of cells in the nervous tissue:

- a. Neurons and Golgi cells
- b. Spine cells and neurons
- c. Protons and glial cells
- d. Neurons and glial cells

GENERAL REVIEW

10. _____ is a natural opiate produced by the brain to diminish pain.

a. Endocrine

b. Serotonin

c. Endorphin

d. Melatonin

GENERAL REVIEW

11. The only cells that send signals away from the cerebellum are _____.

- a. Purkinje cells
- b. Glial cells
- c. Action potentials
- d. Mineke cells

GENERAL REVIEW

12. _____ is damage to or destruction of a cell due to exhaustion or injury.

a. Chromatolysis

b. Myelination

c. Refraction

d. Entrapment

GENERAL REVIEW

13. Paralysis affecting only one side of the body is referred to as _____.

a. Quadriplegia

b. Hemiplegia

c. Transplegia

d. Omniplegia

GENERAL REVIEW

14. Transient ischemic attack is another term for _____.

a. Muscle spasm

b. Angina

c. Mini-stroke

d. Seizure

GENERAL REVIEW

15. _____ provide information about movement and position.

a. Proprioceptors

b. Nociceptors

c. Photoceptors

d. Motoceptors