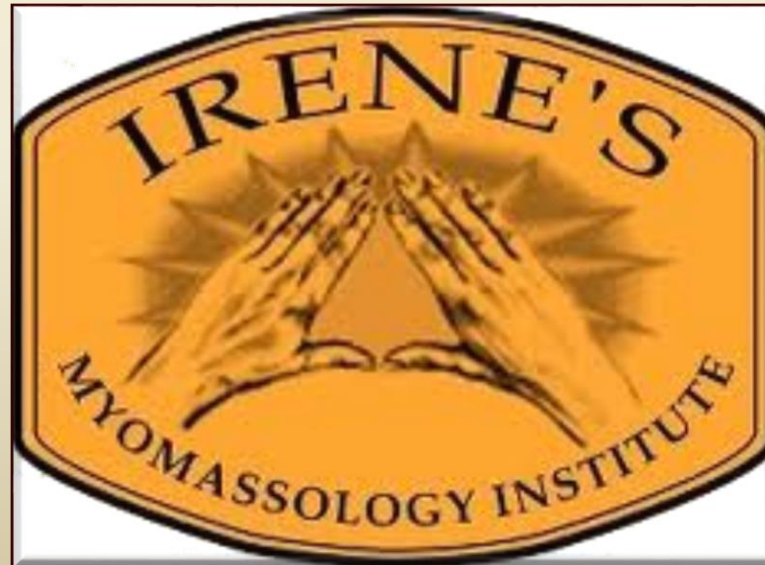
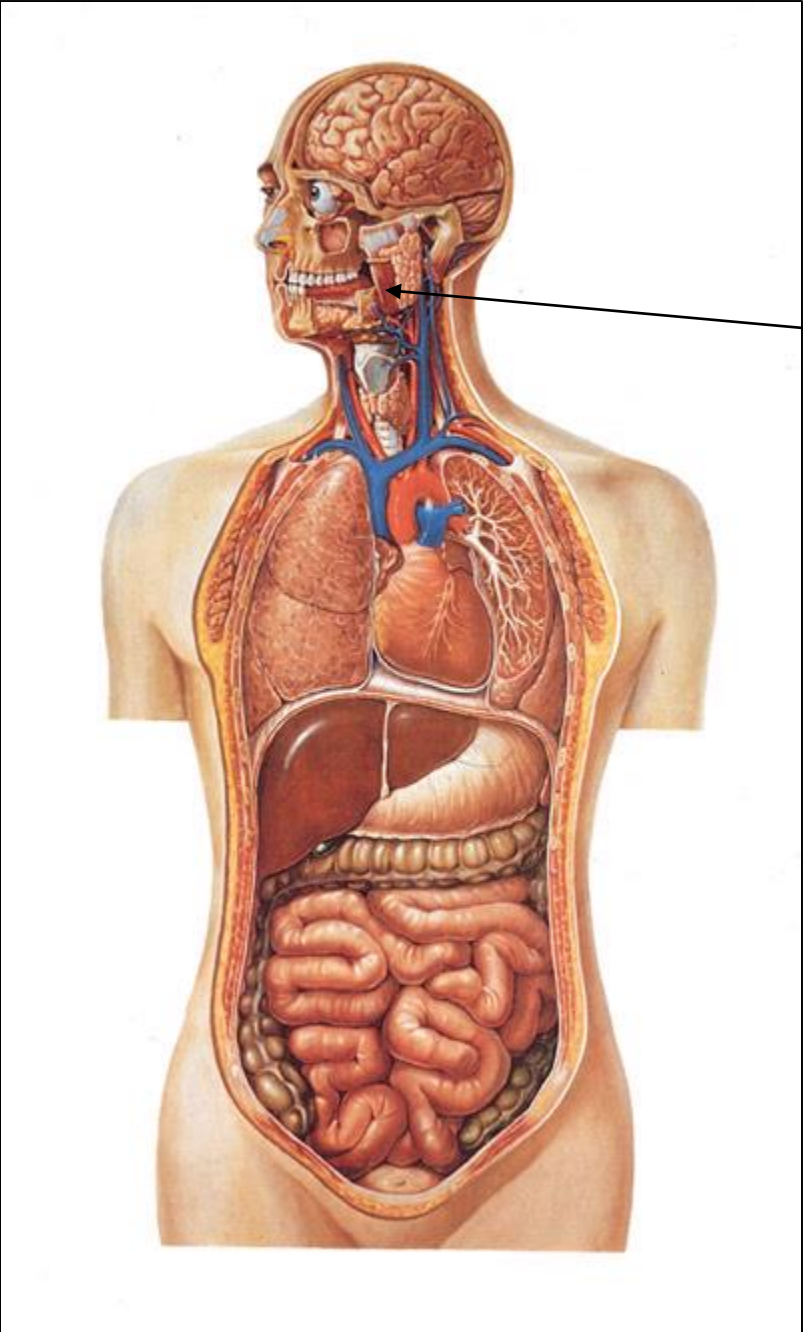


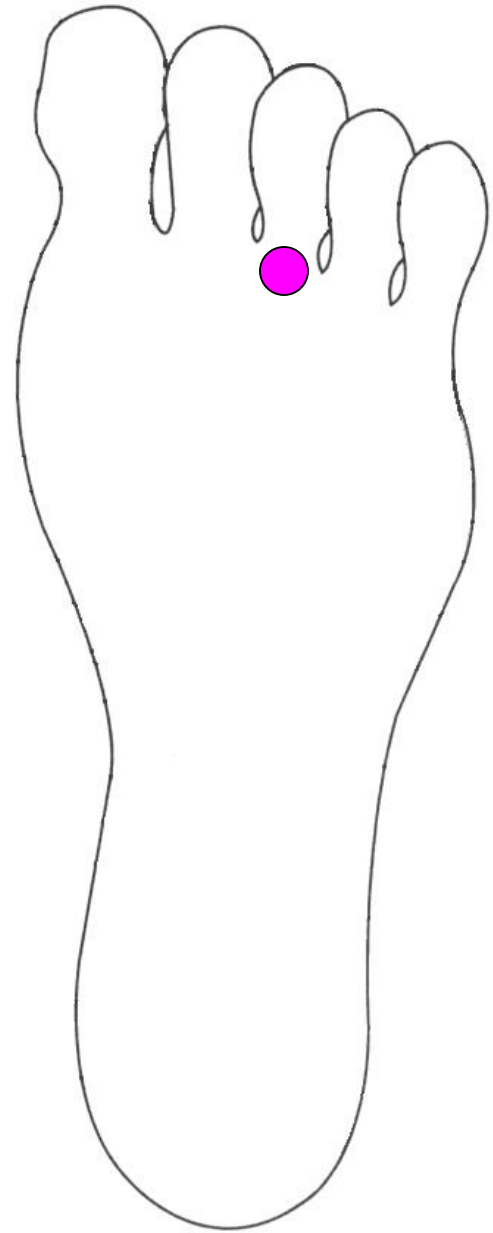
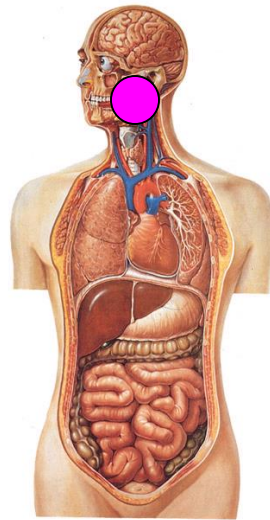
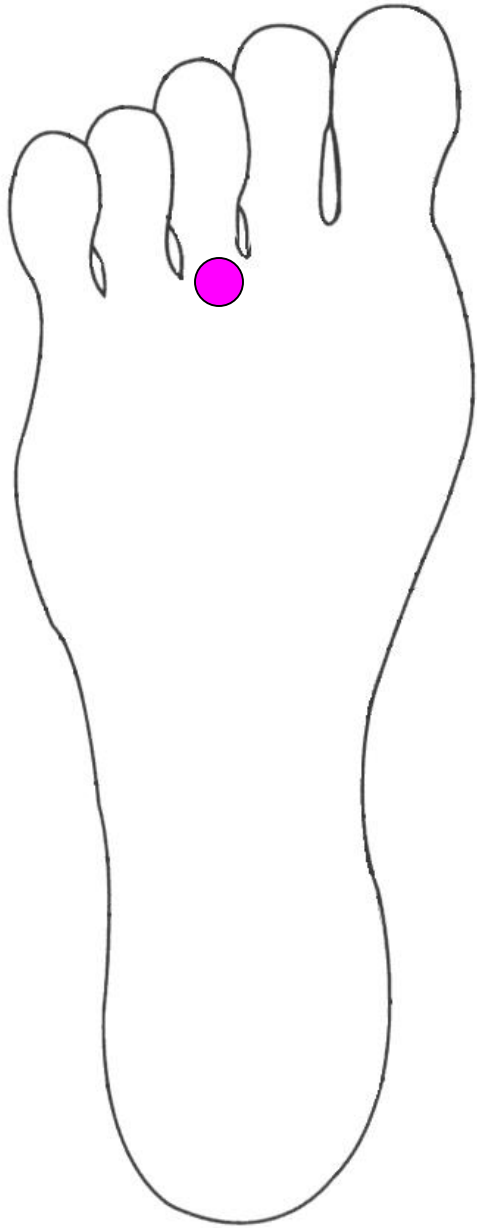
Instructor's Review for Final Exams

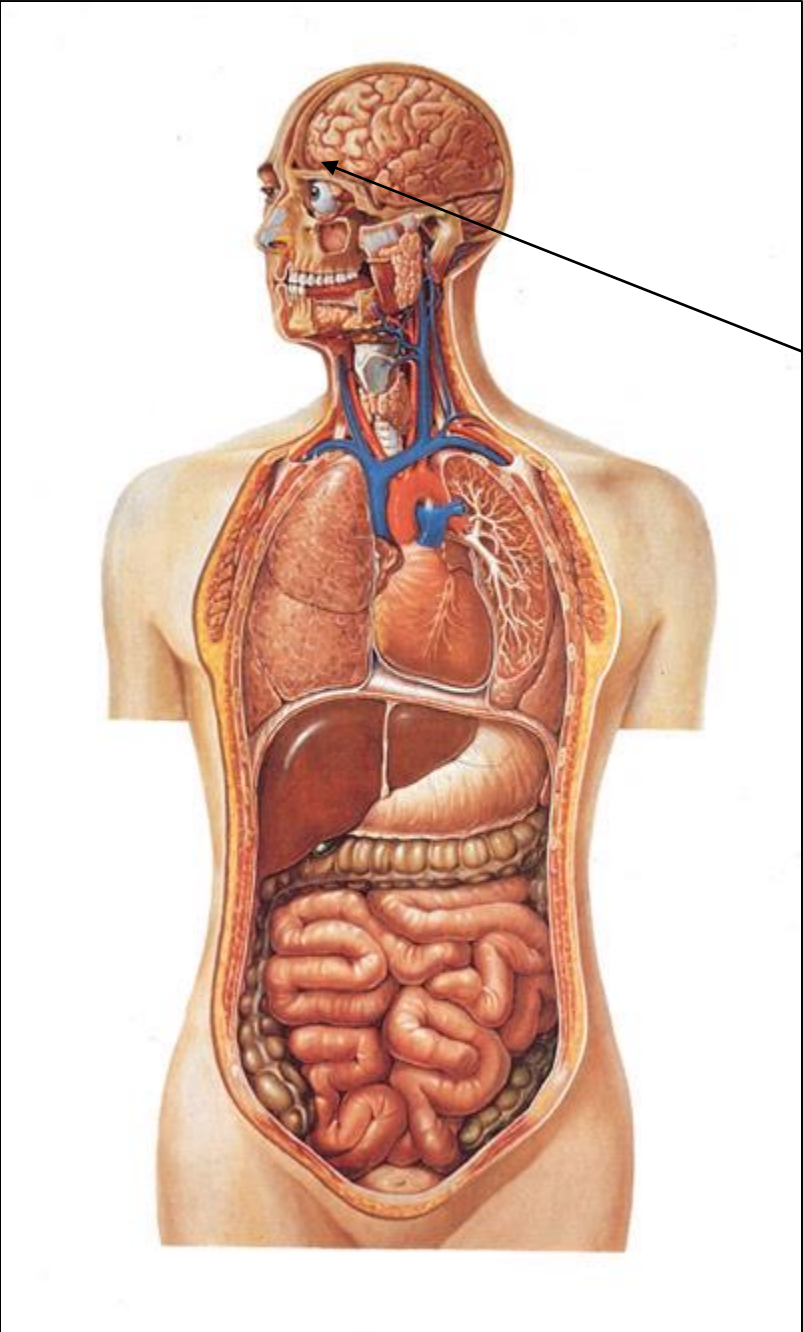
Reflexology



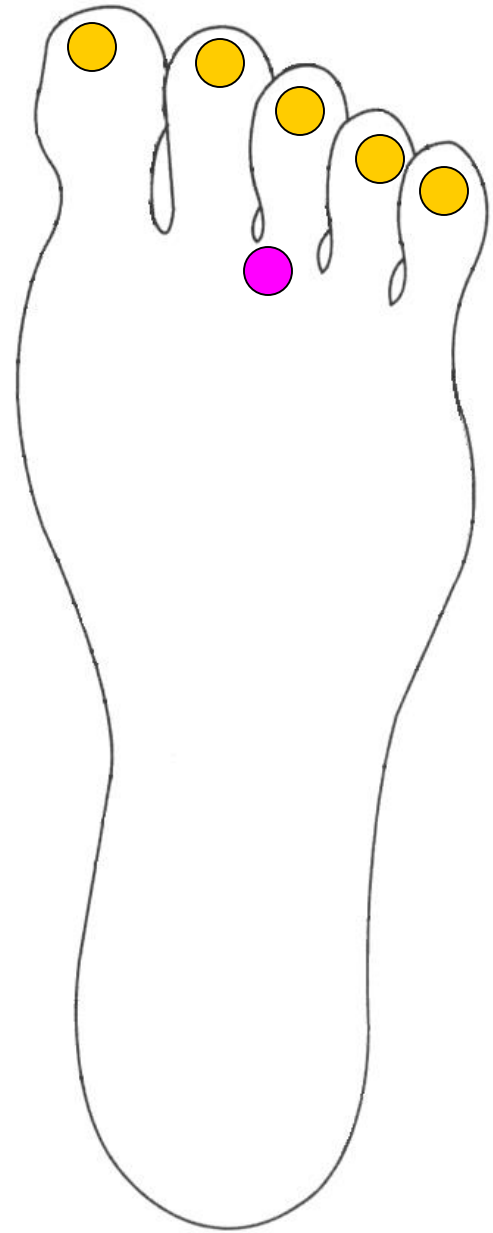
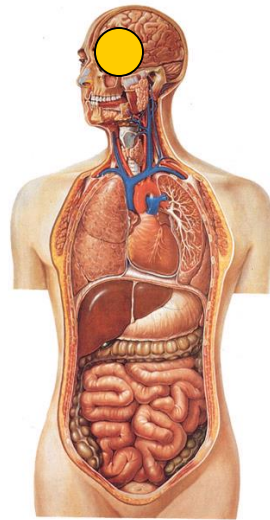
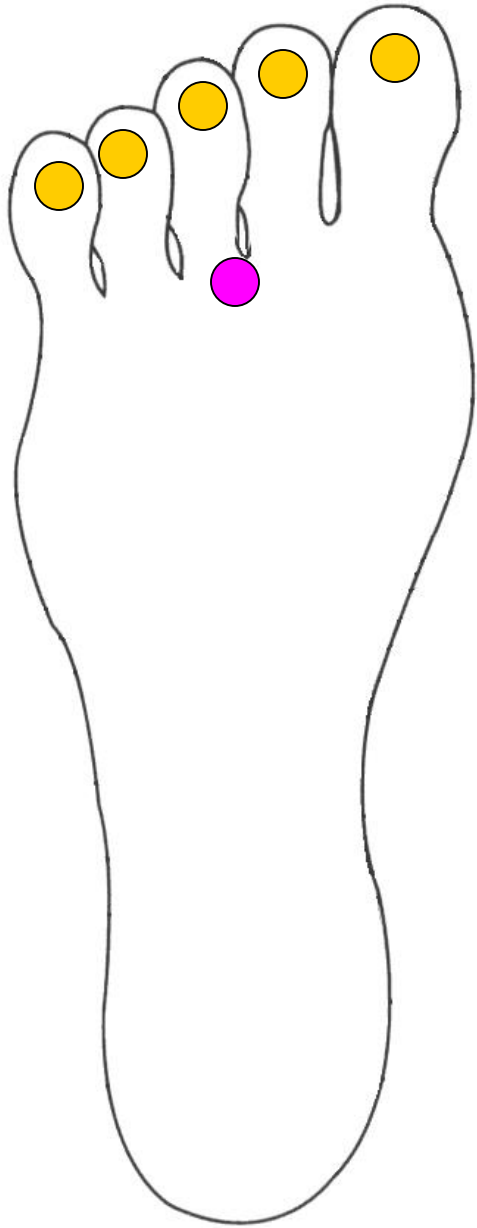


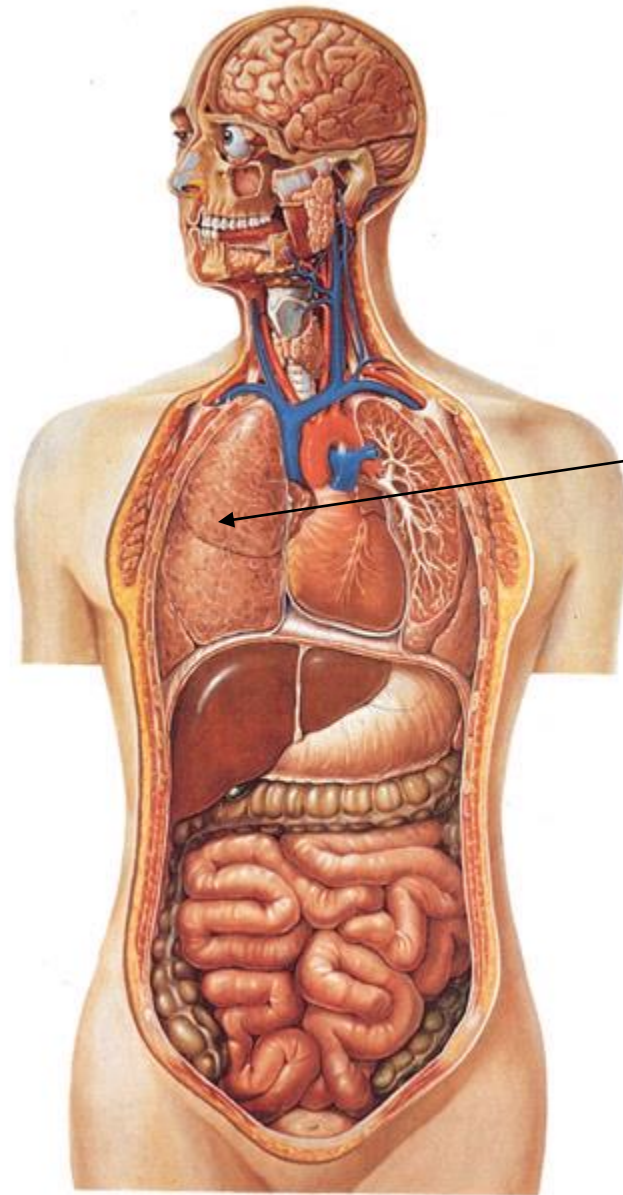
Jaw





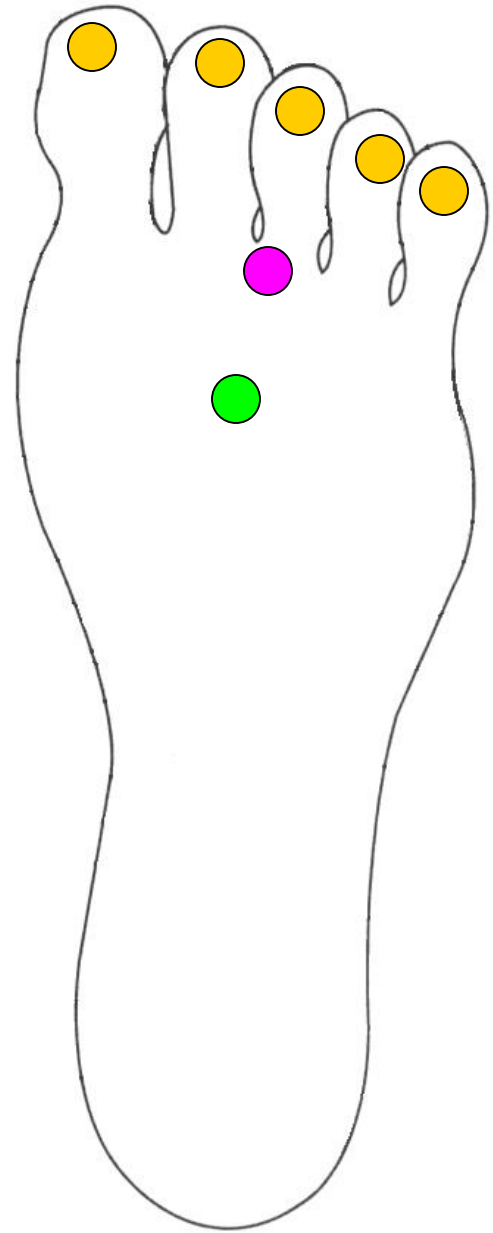
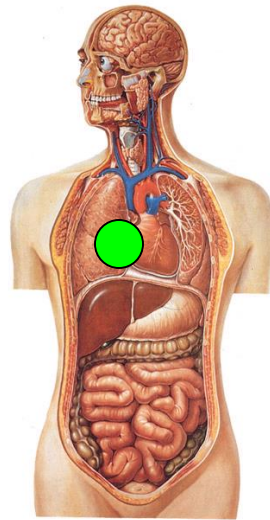
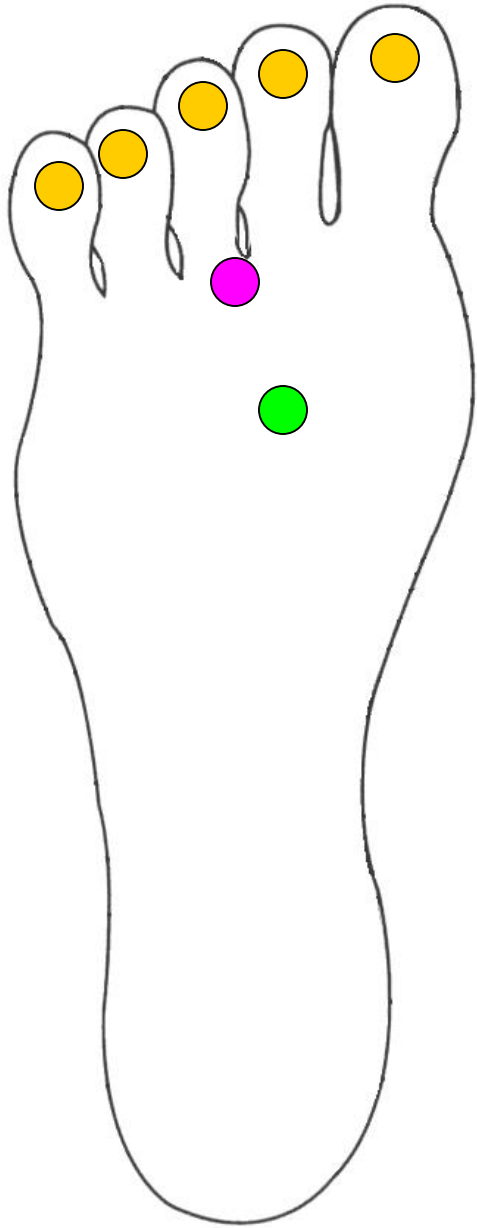
Sinus and Brain

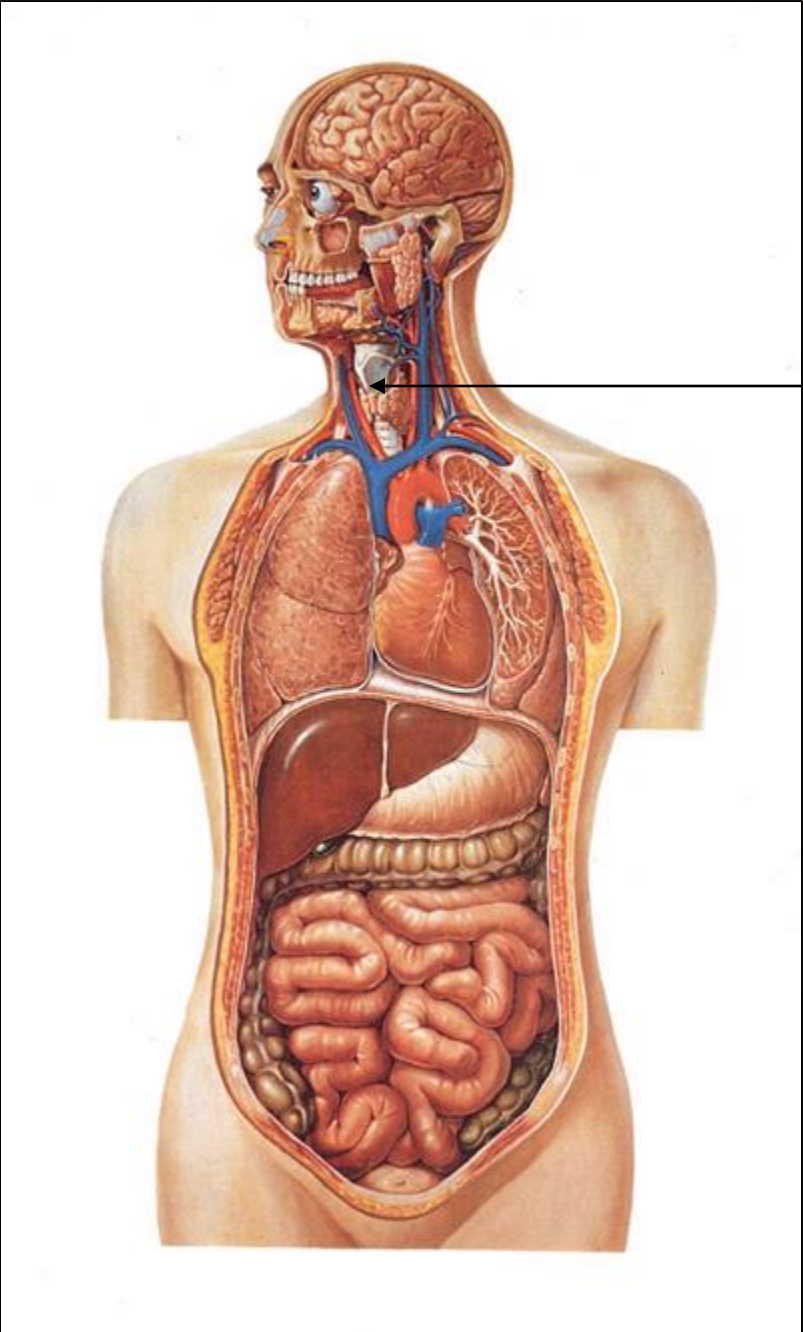




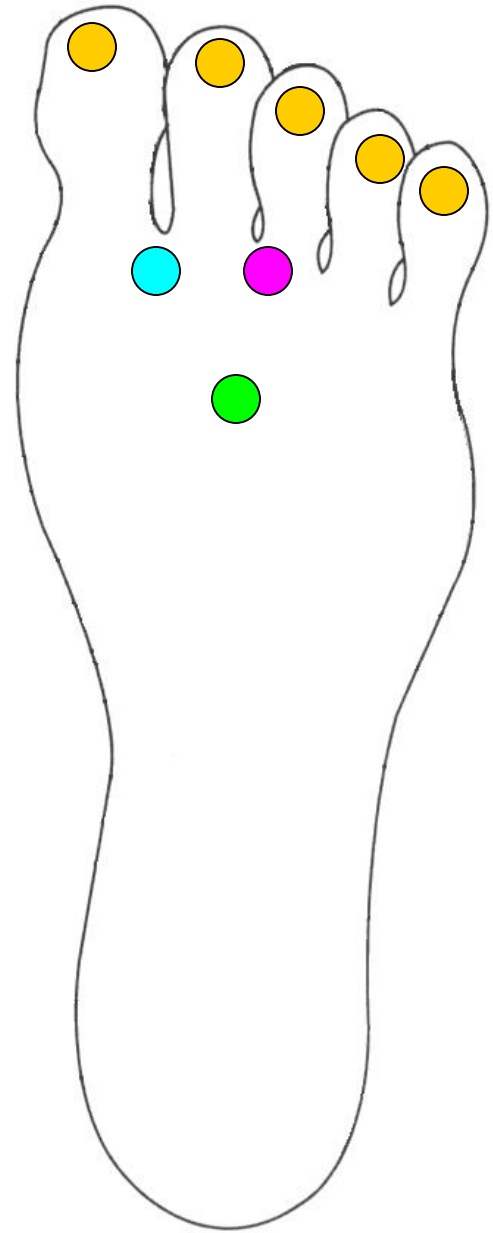
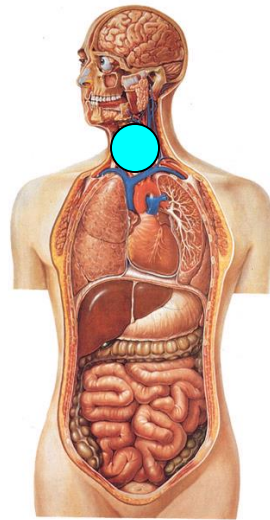
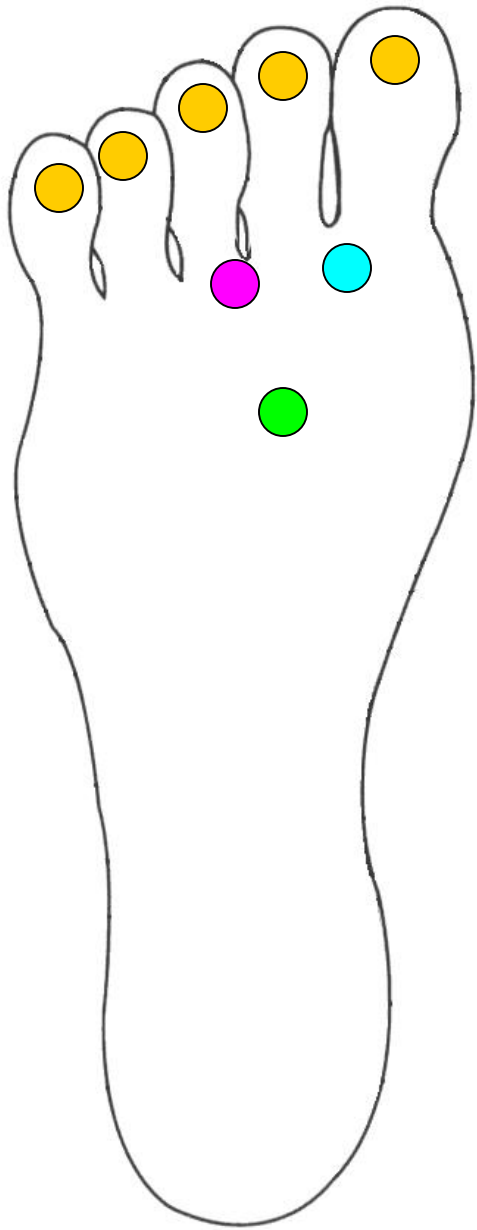
Lungs

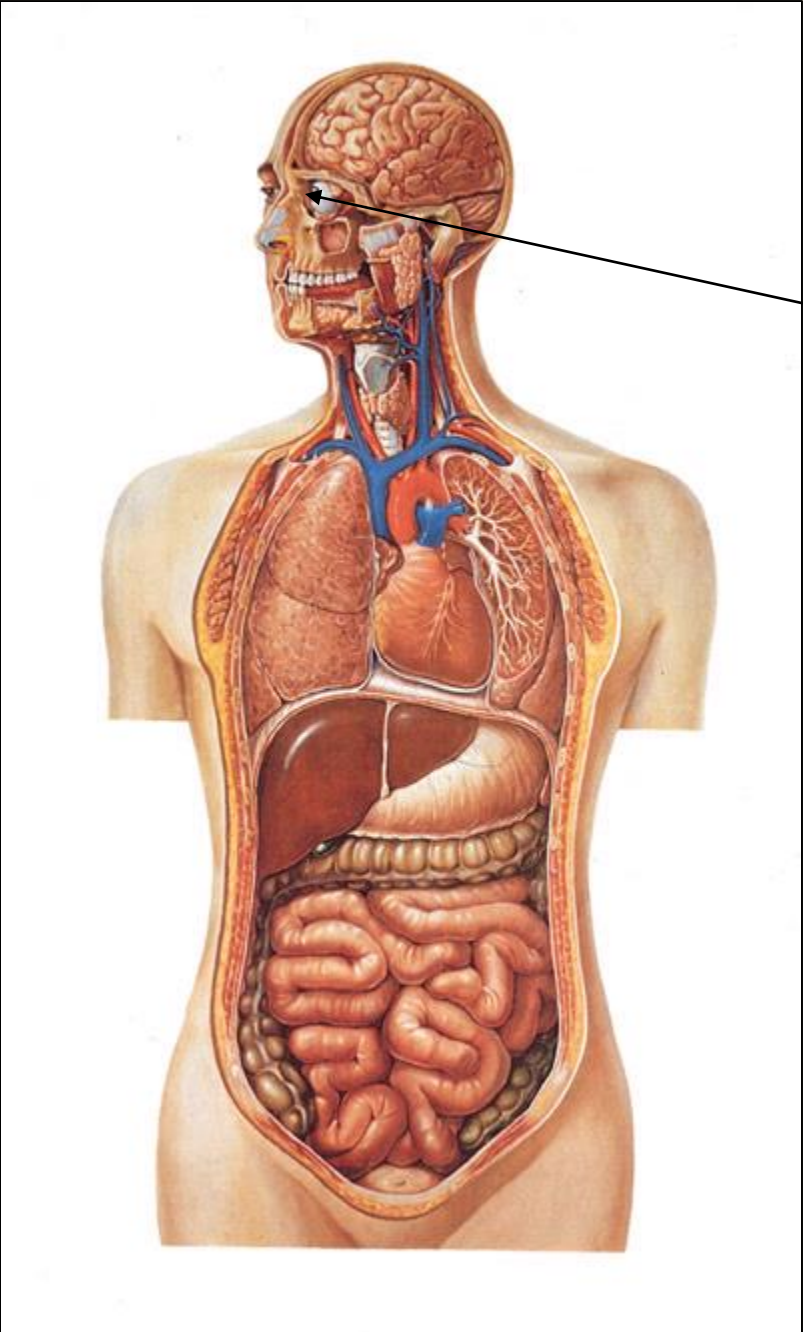




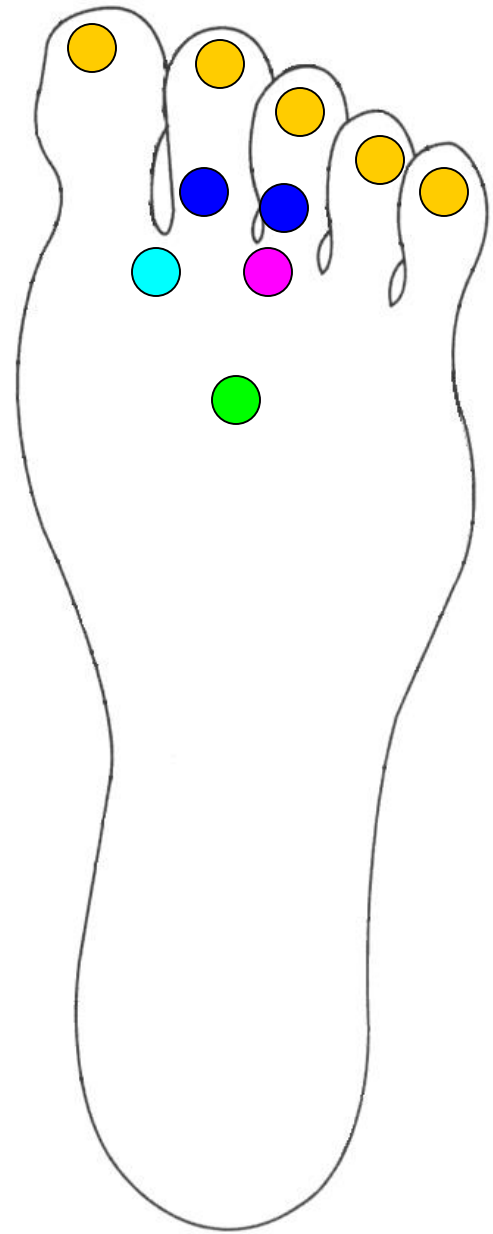
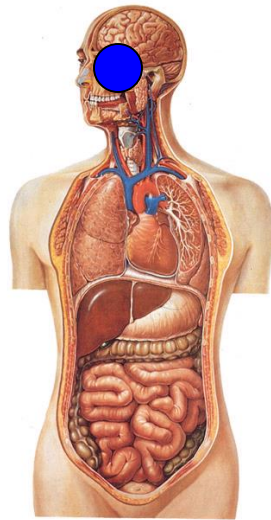
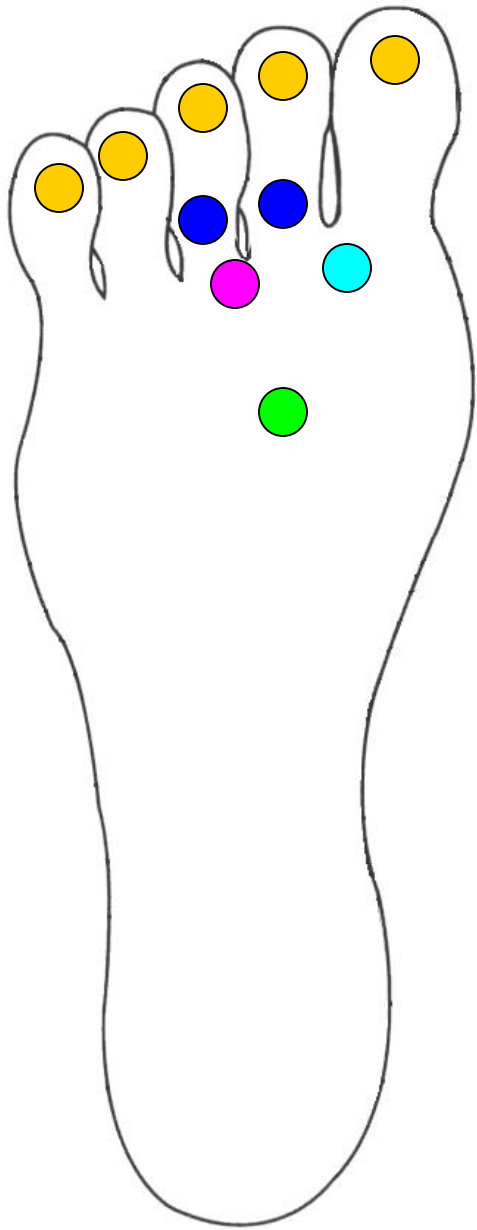


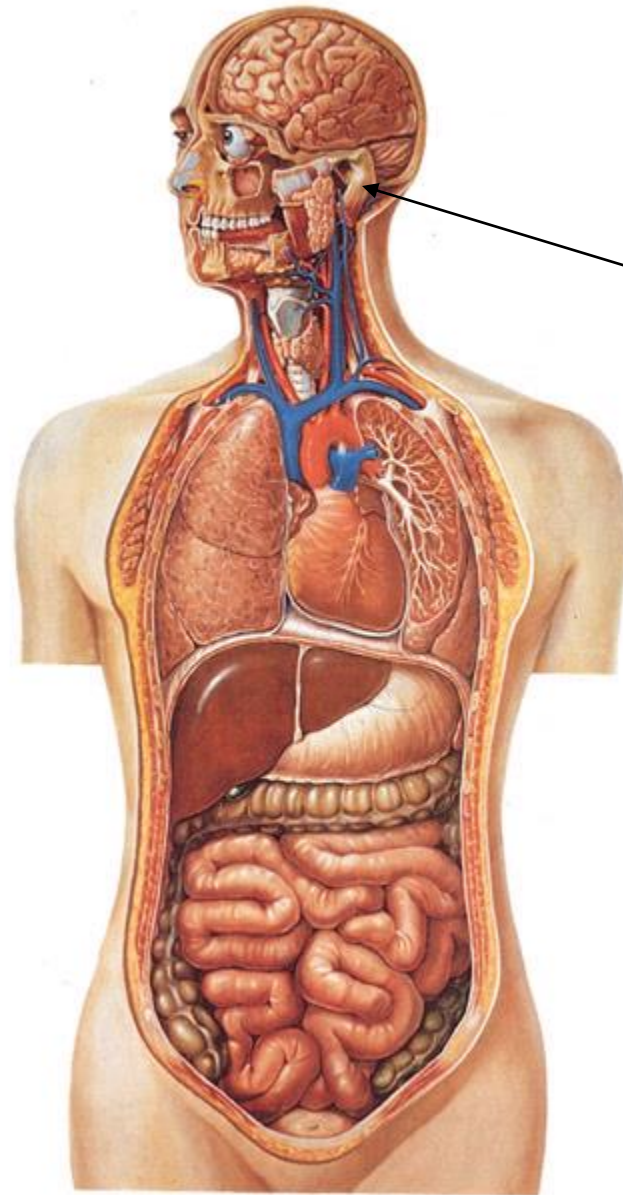
Thyroid Gland



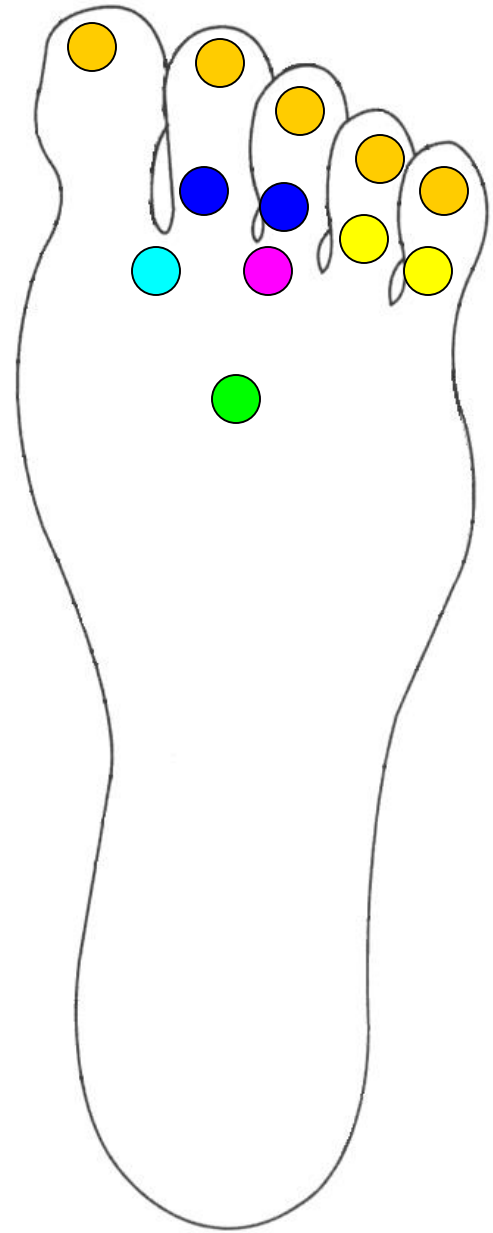
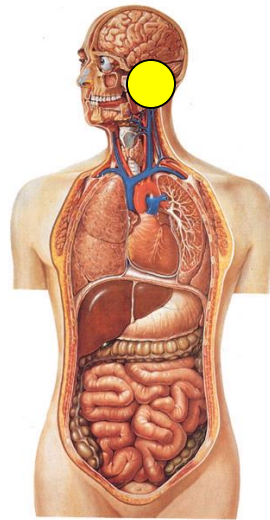
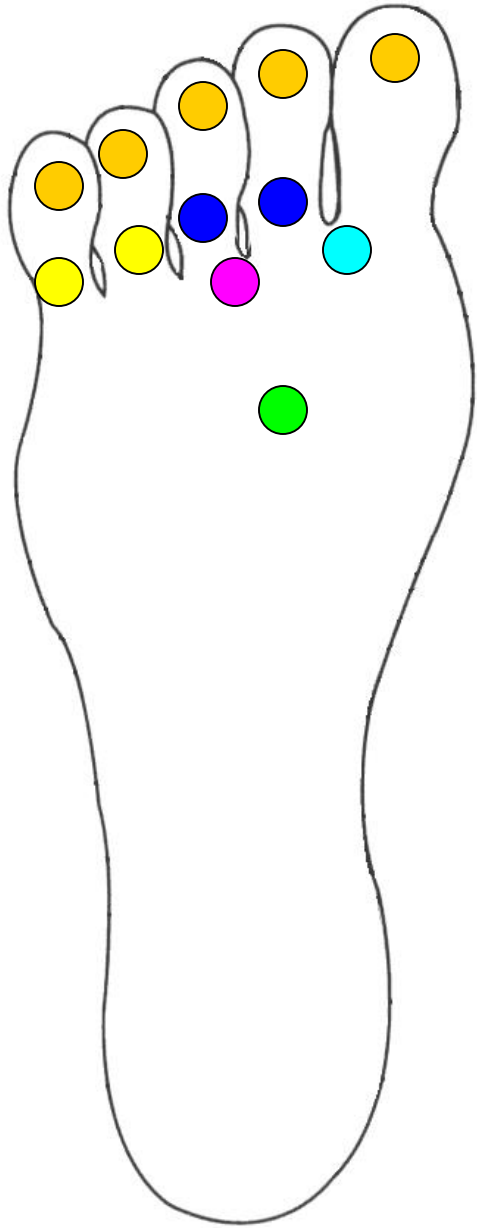


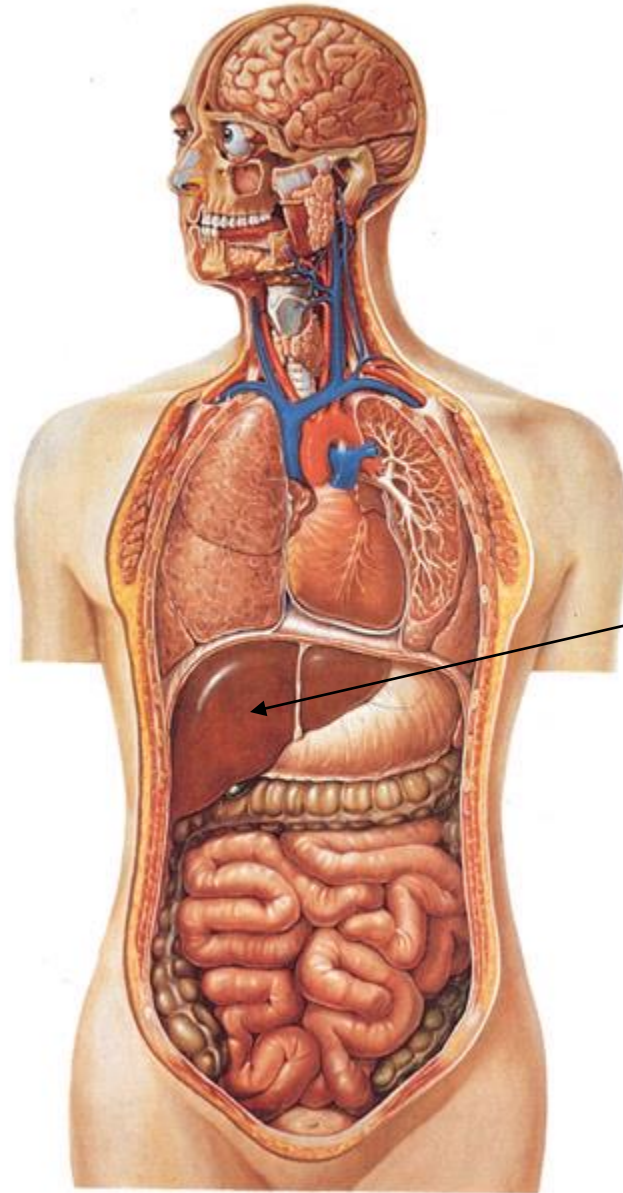
Eyes





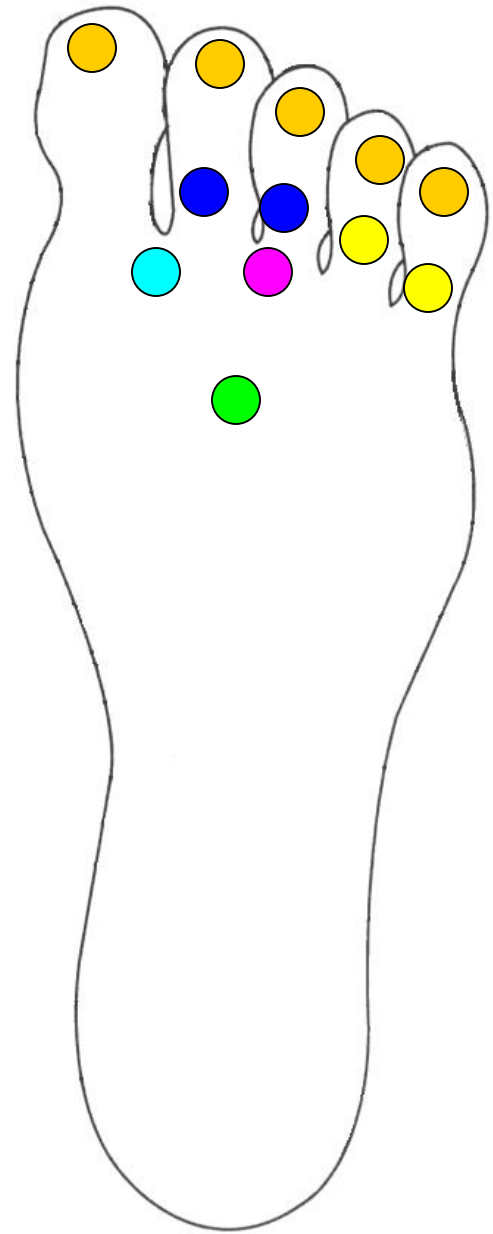
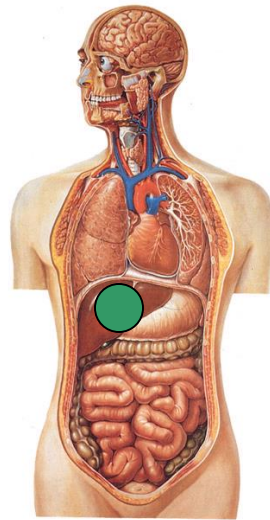
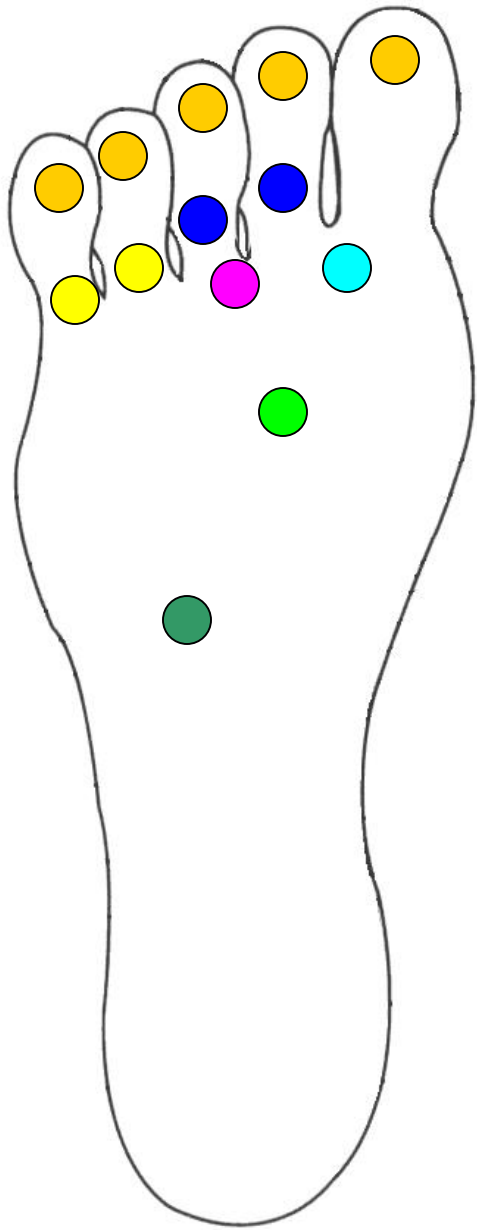
Ears





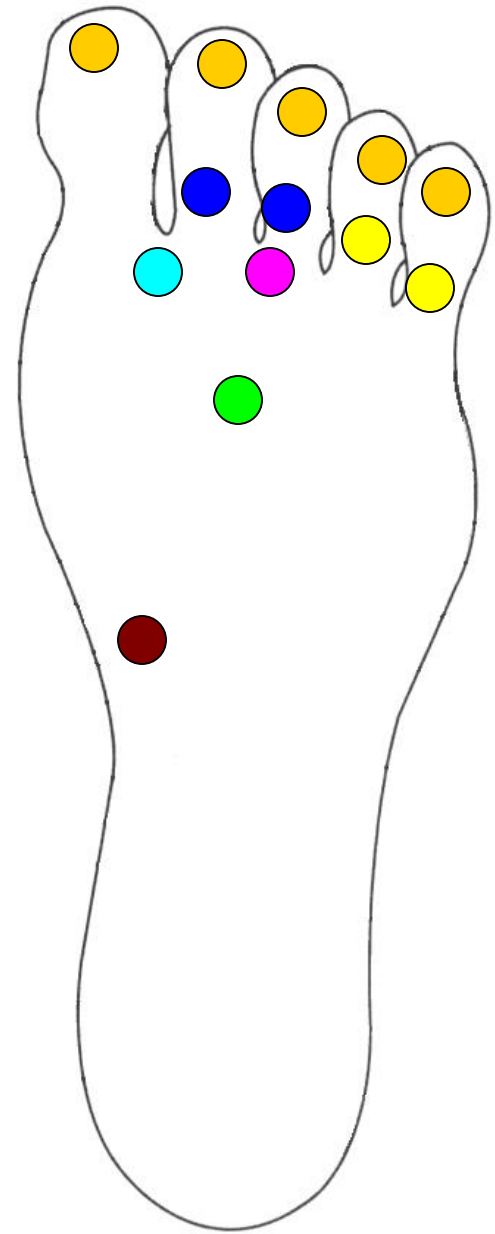
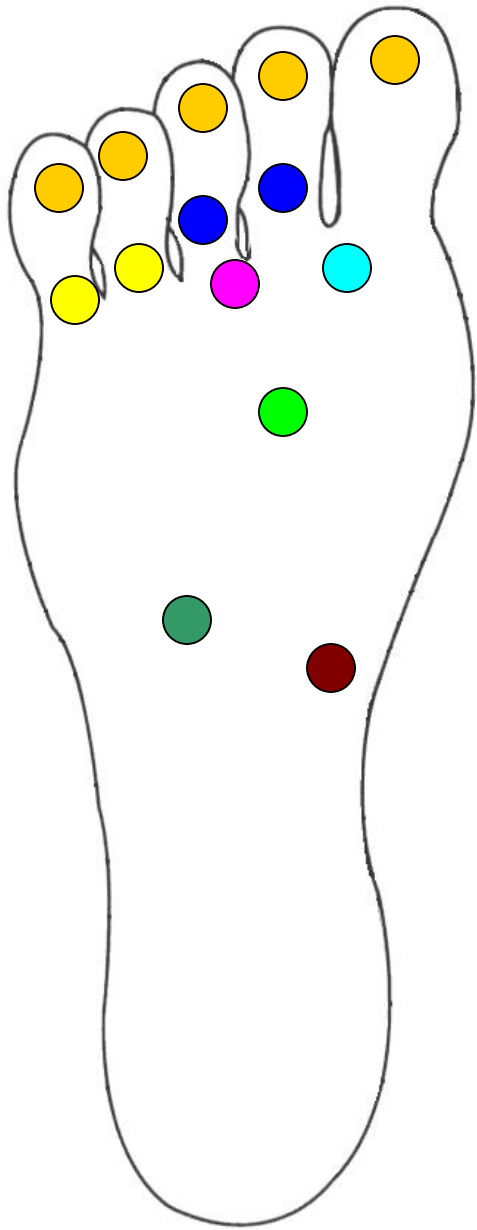
Liver

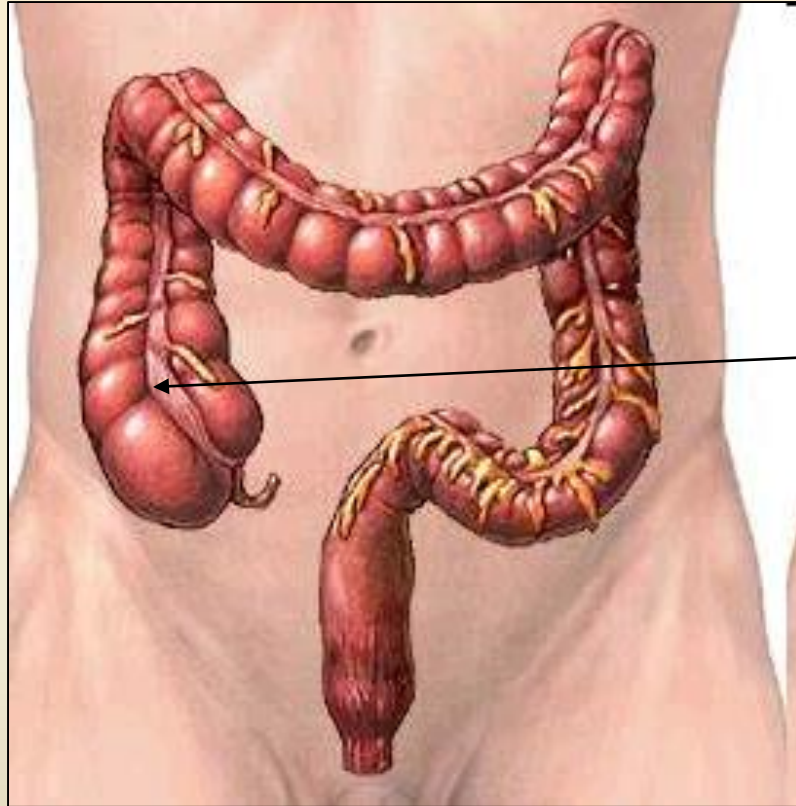




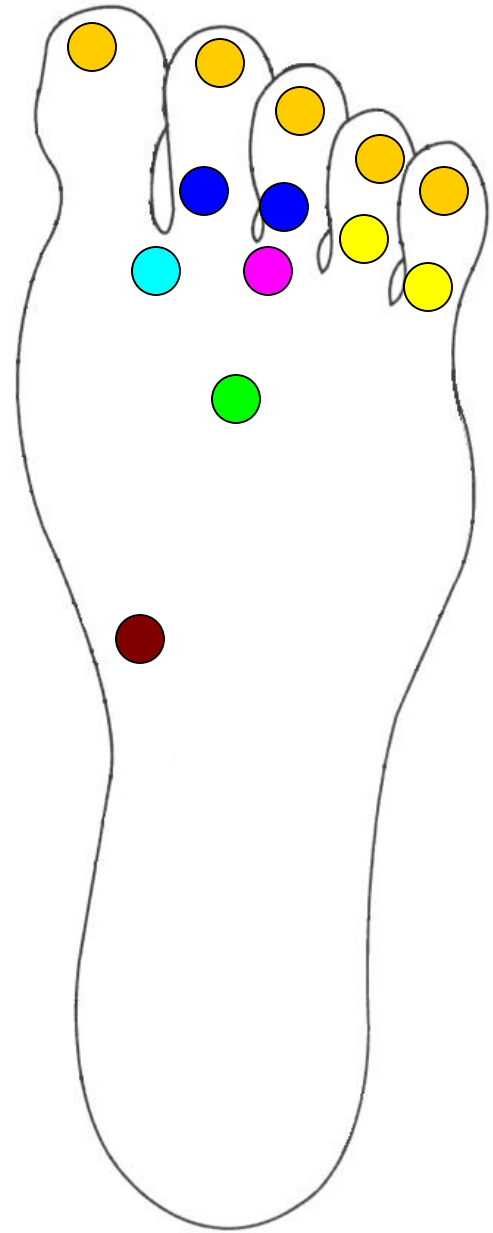
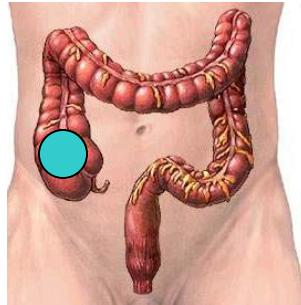
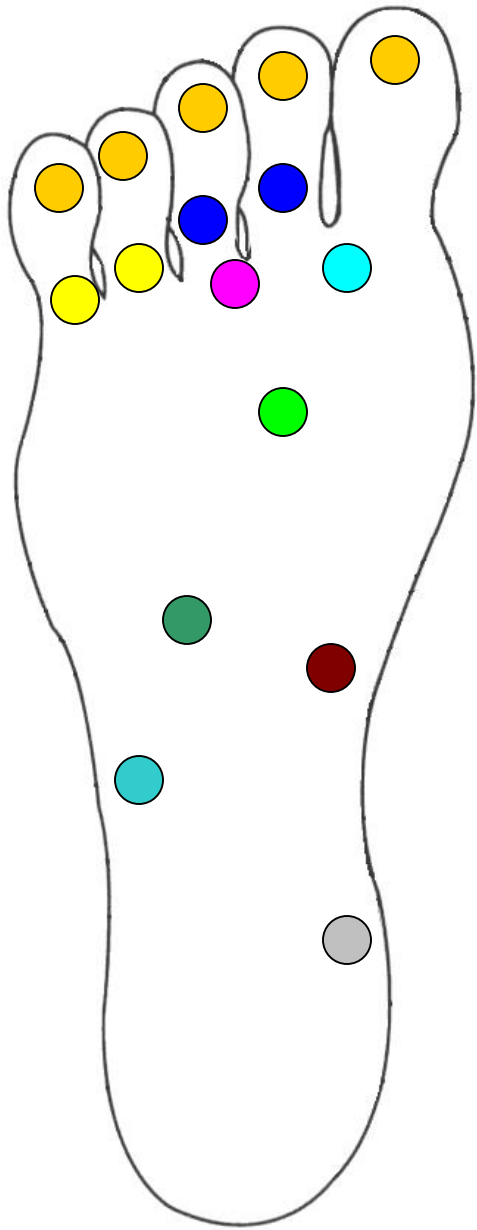


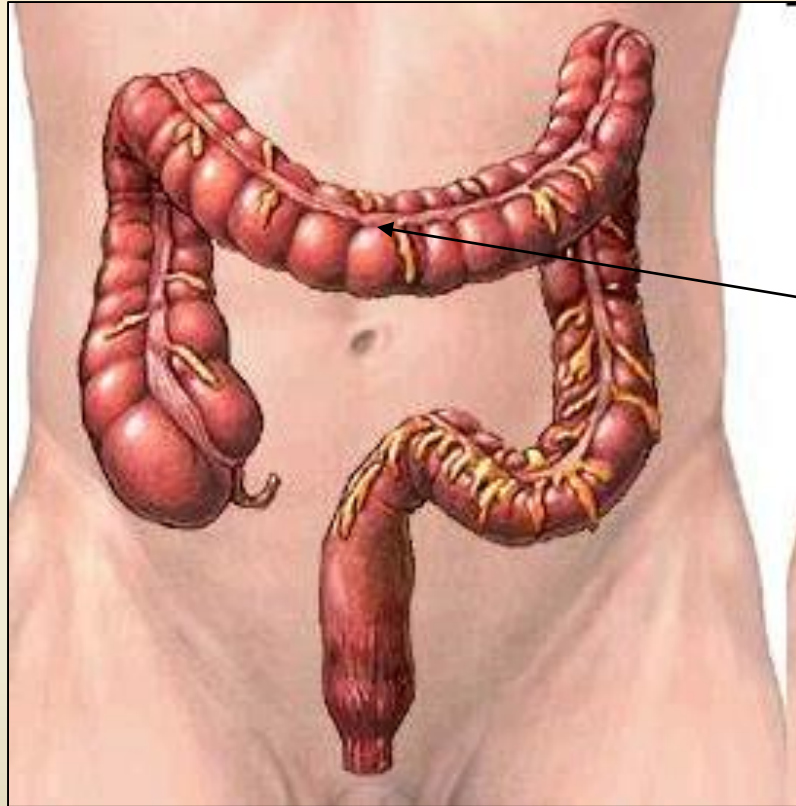
Kidney



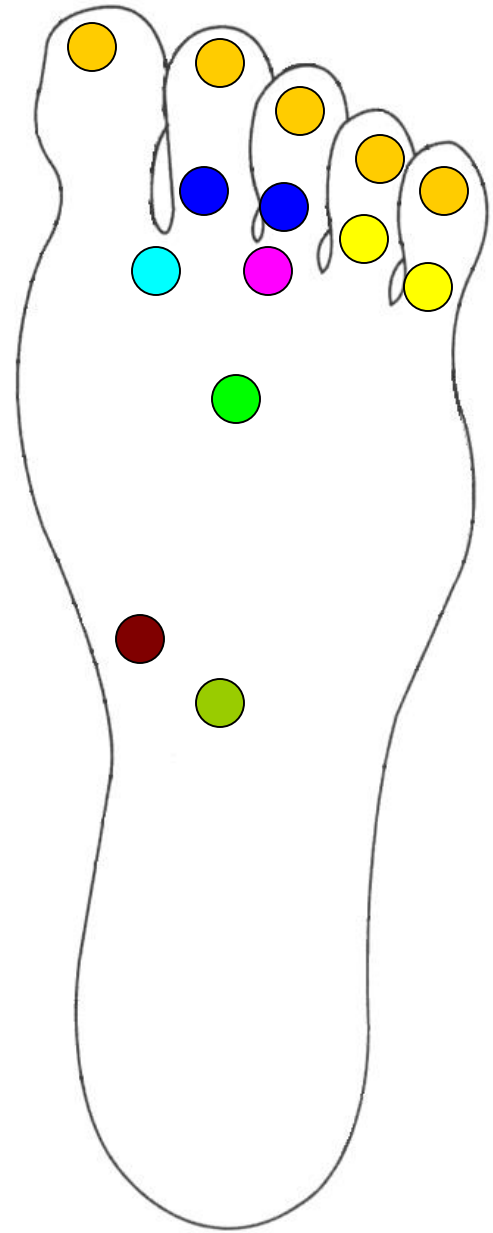
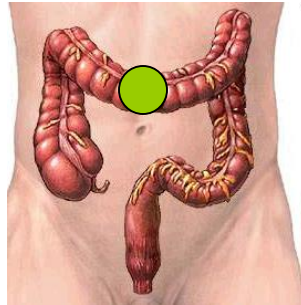
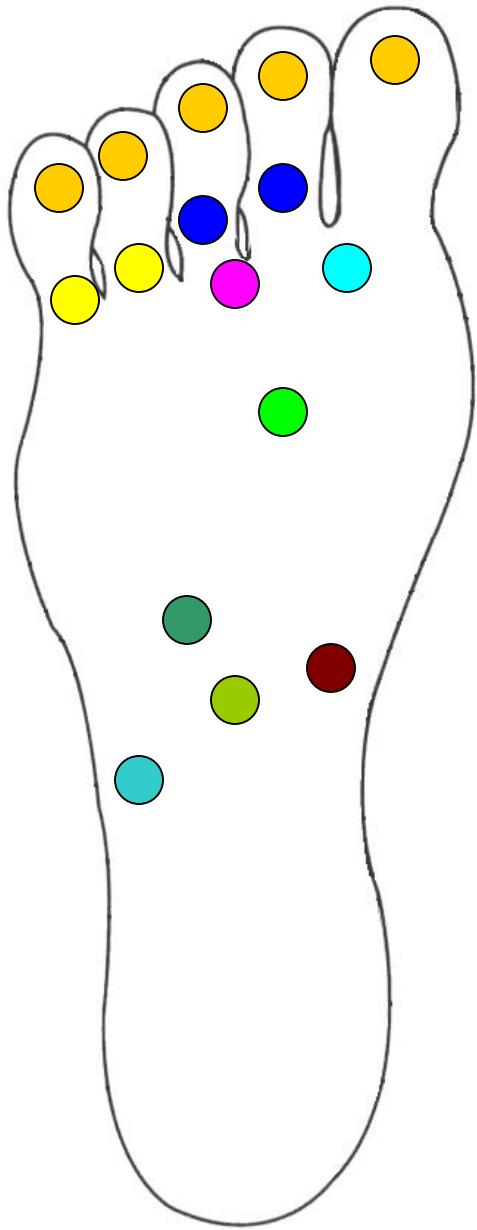


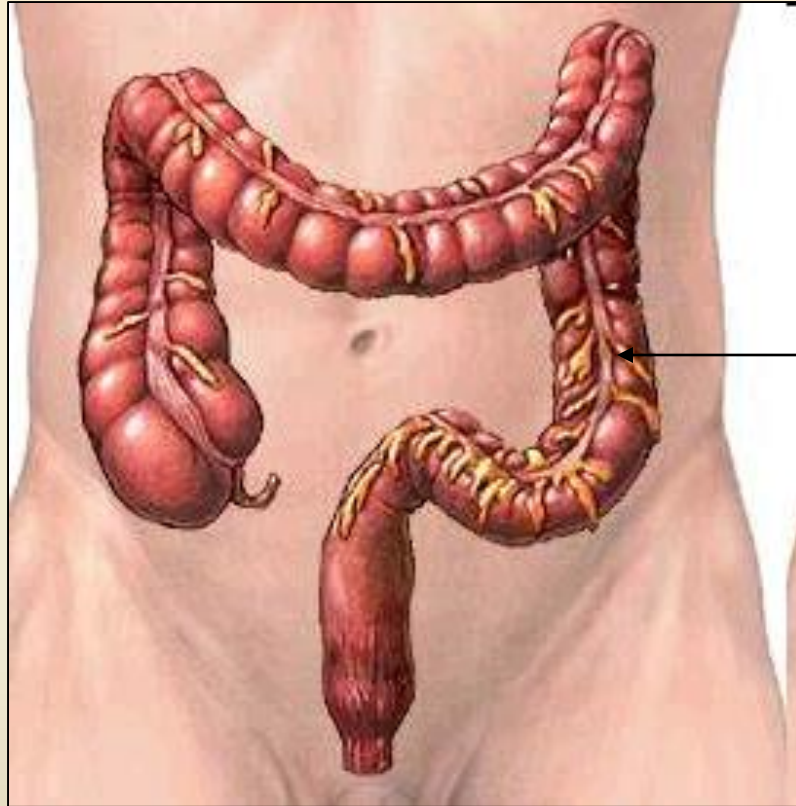
Ascending colon



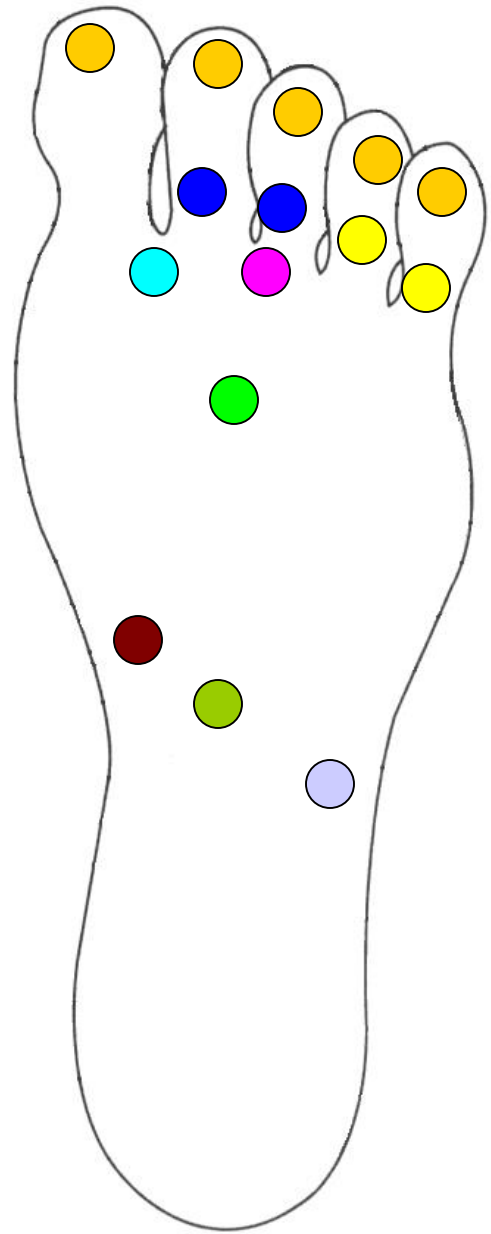
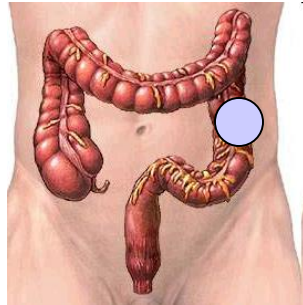
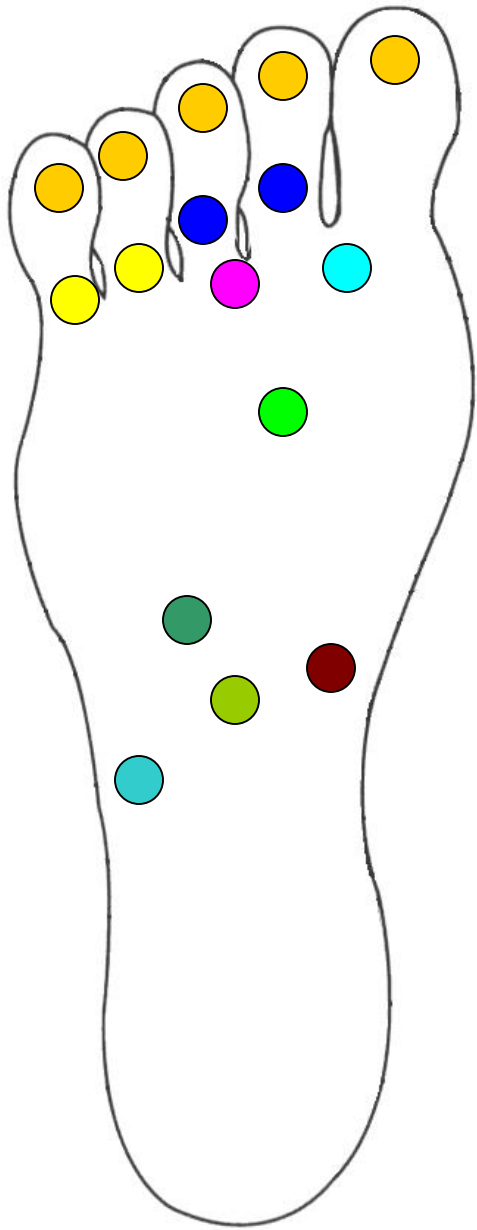


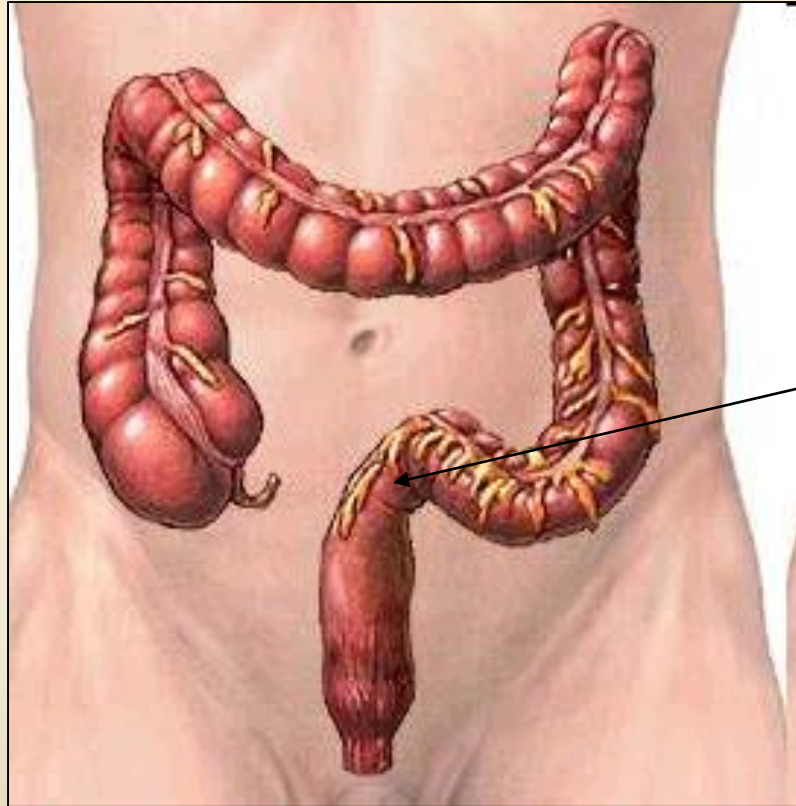
Transverse colon



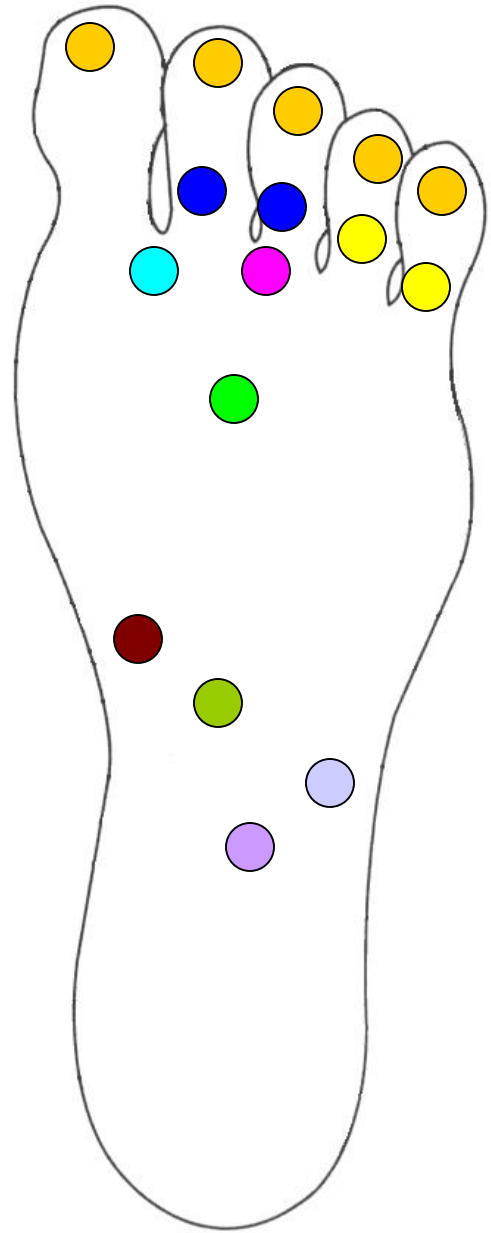
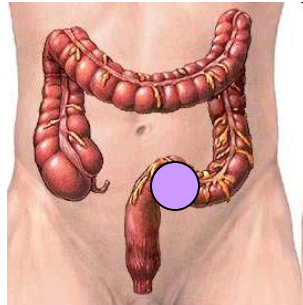
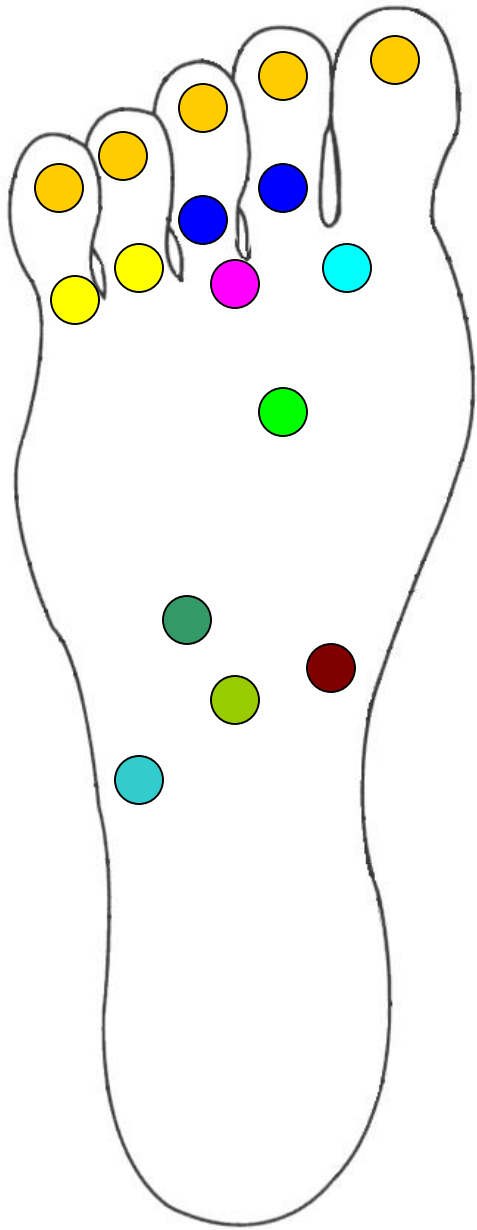


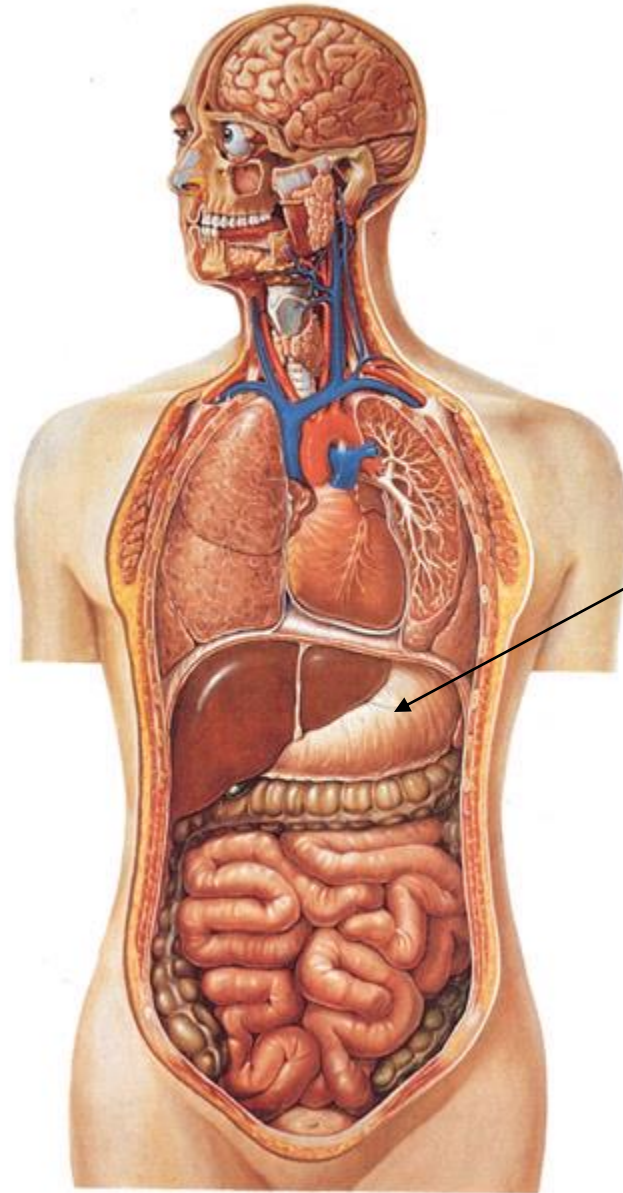
Descending colon



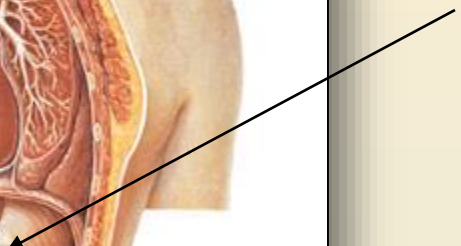


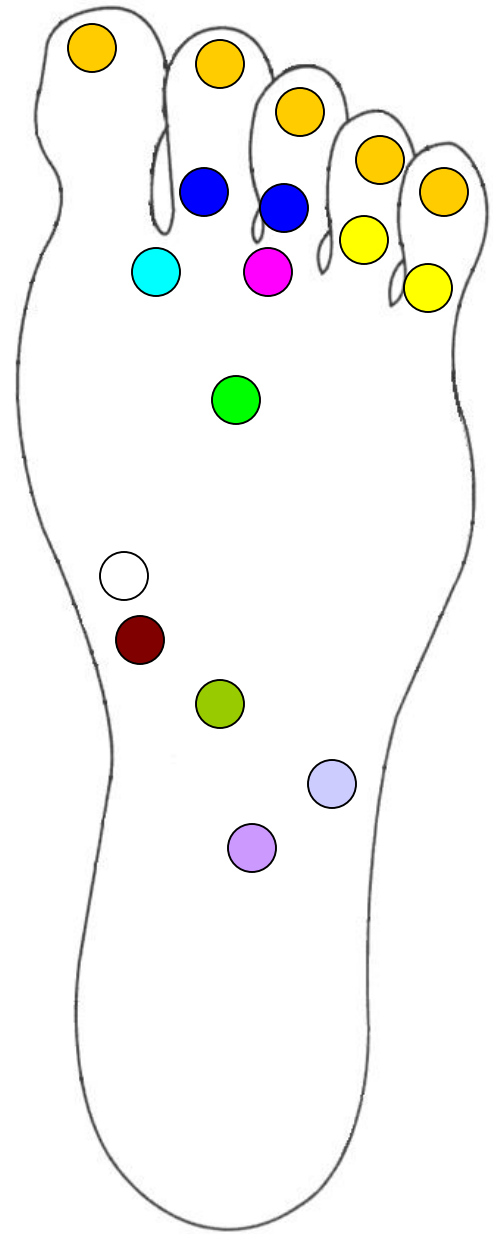
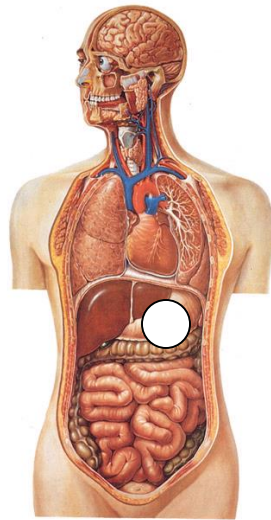
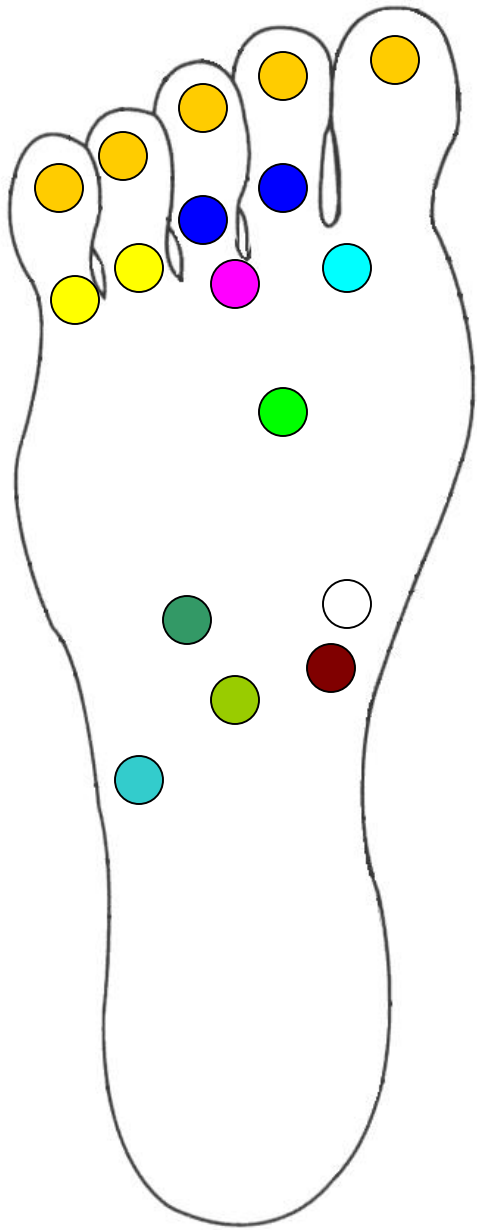
Sigmoid colon

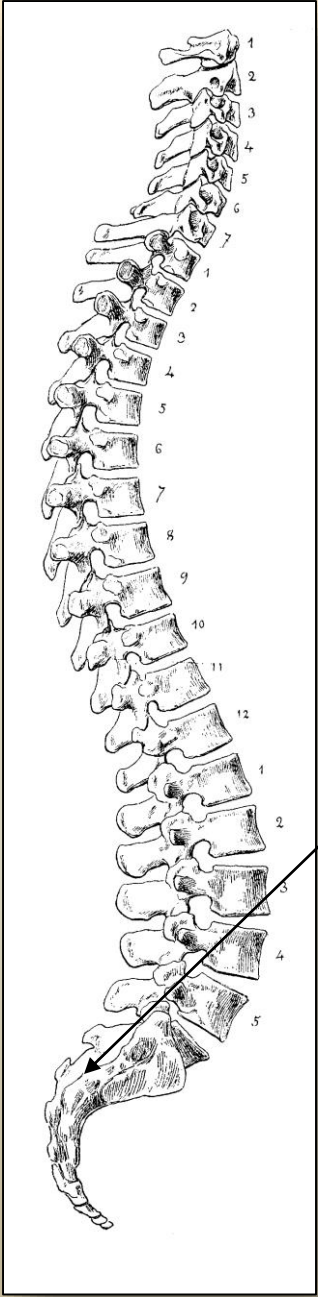




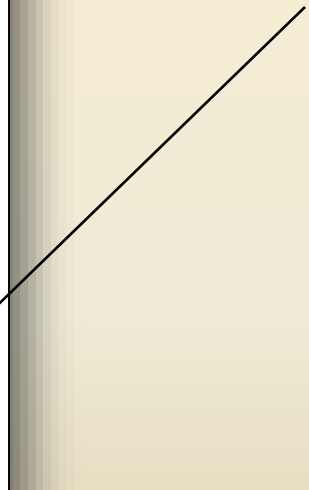
Stomach

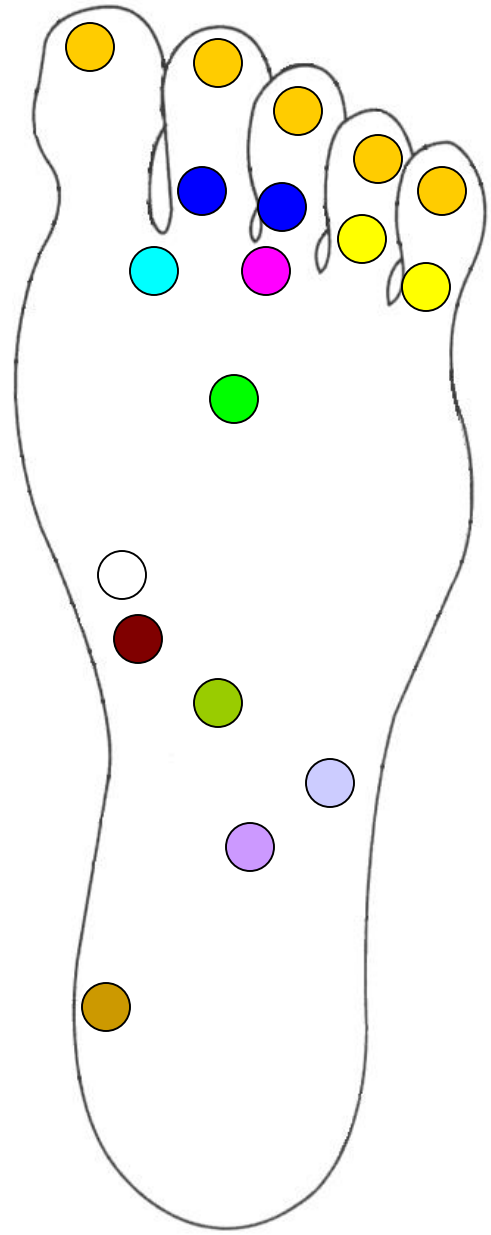
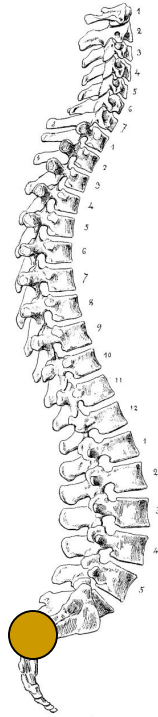
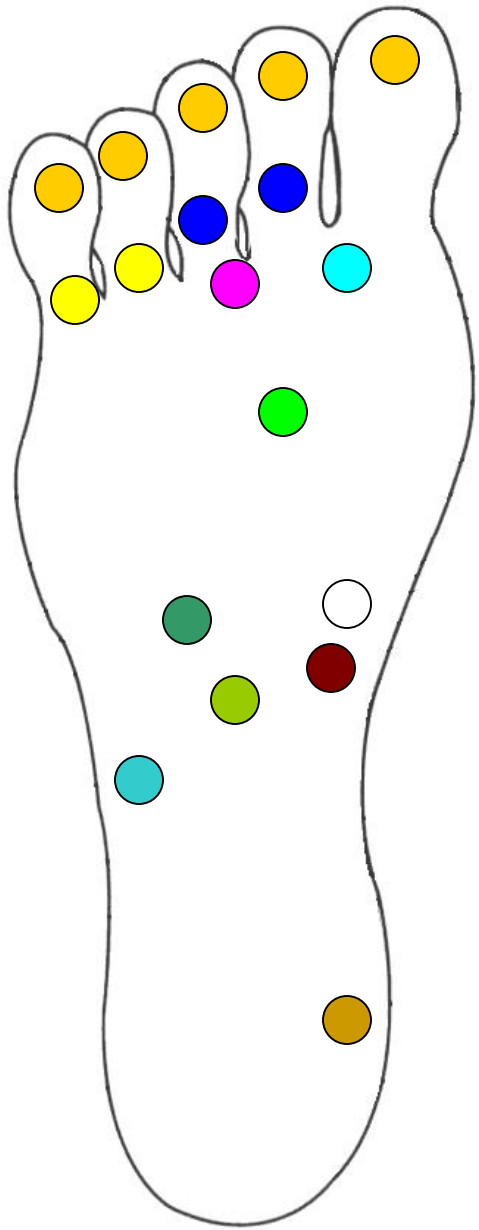


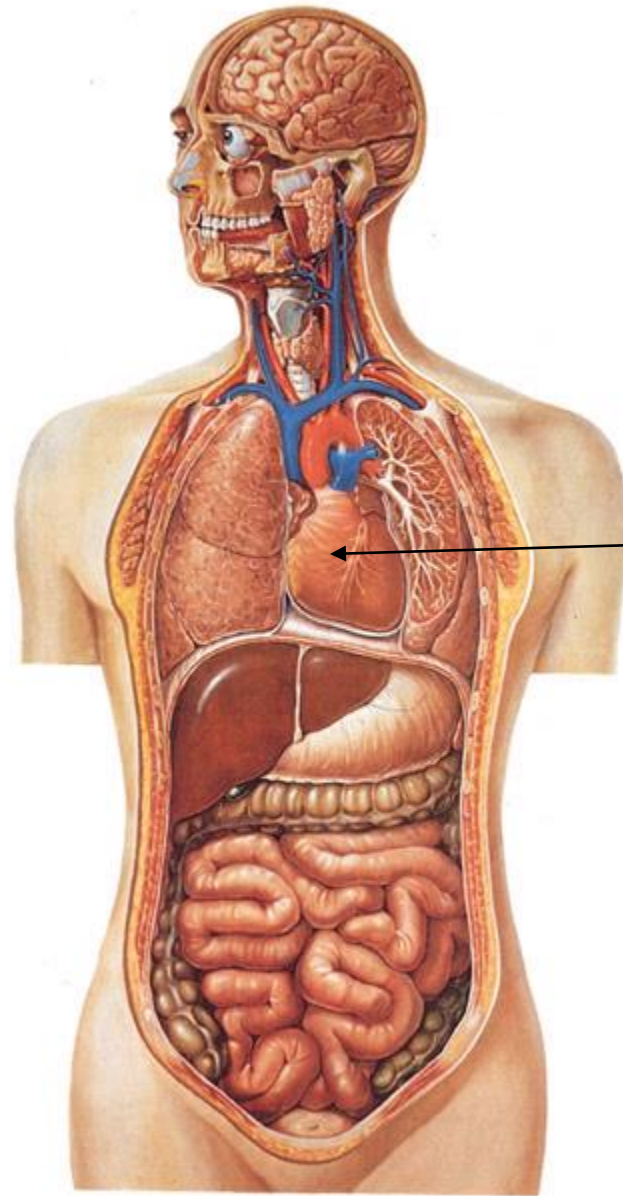




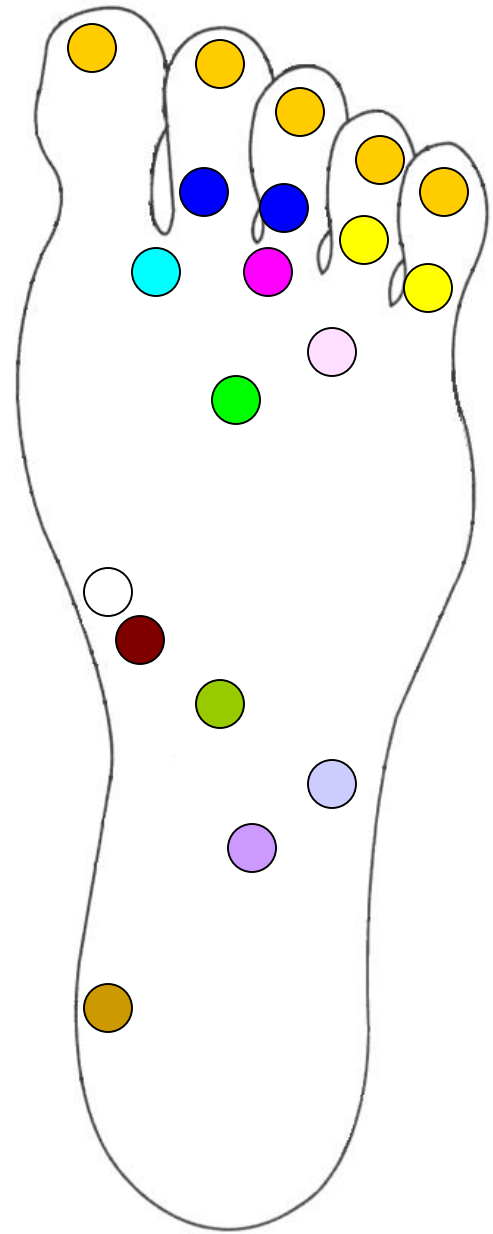
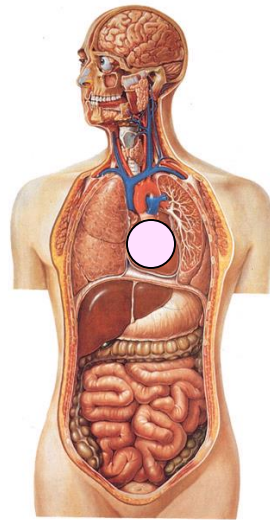
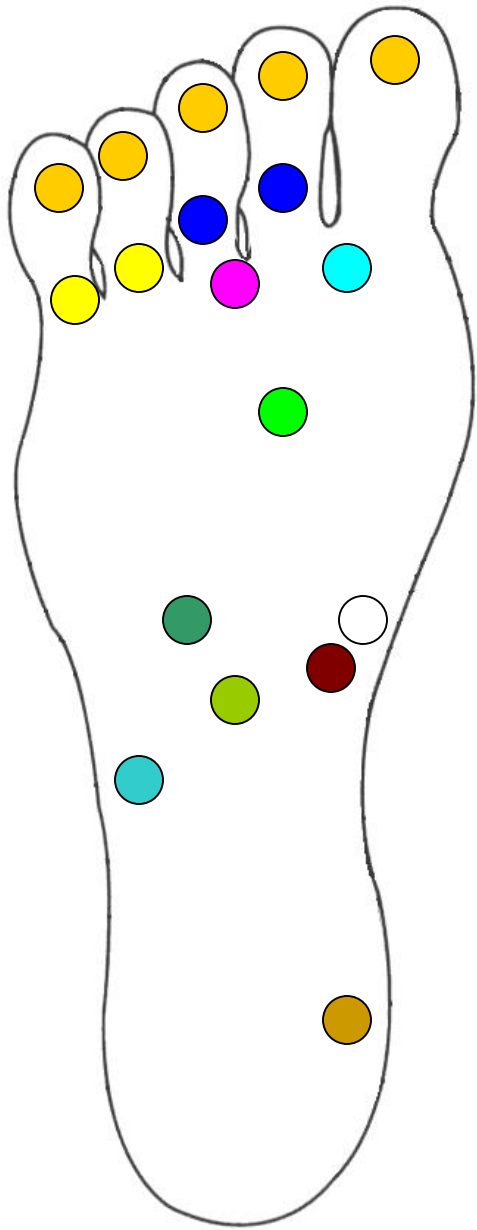
Sacrum

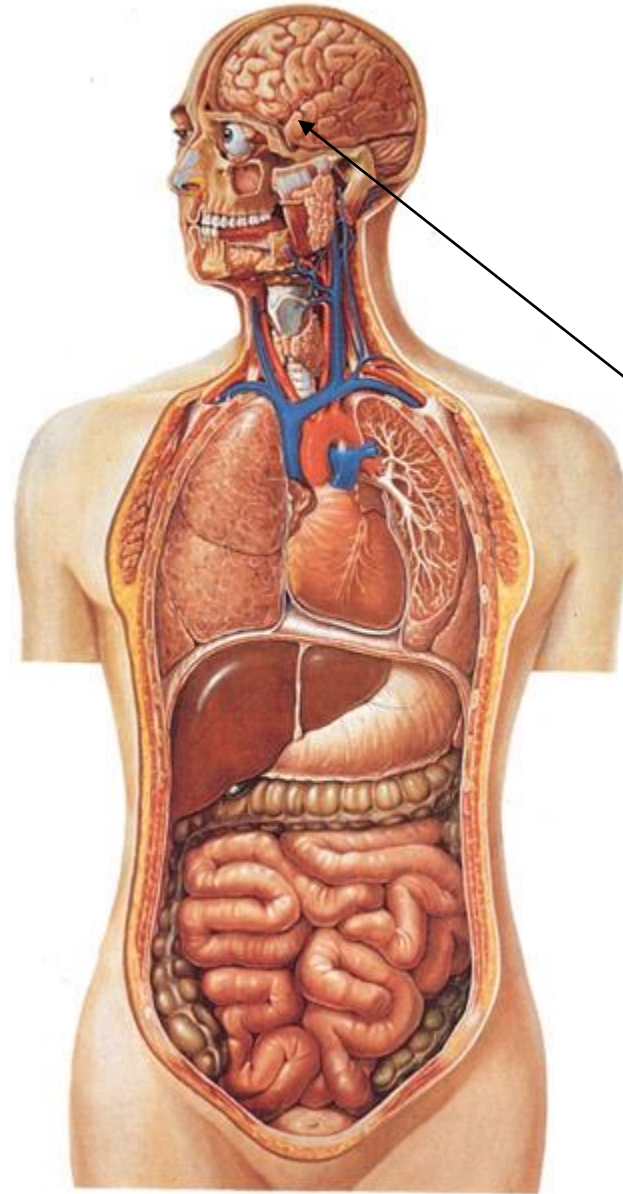




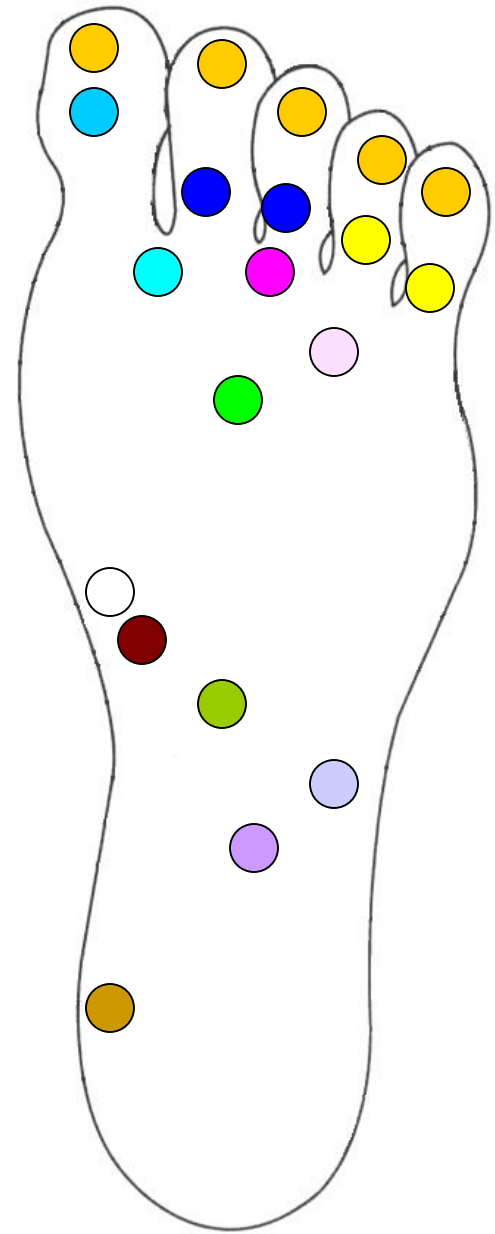
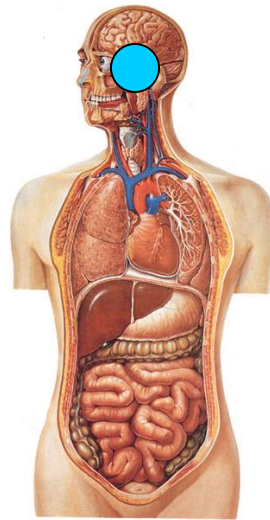
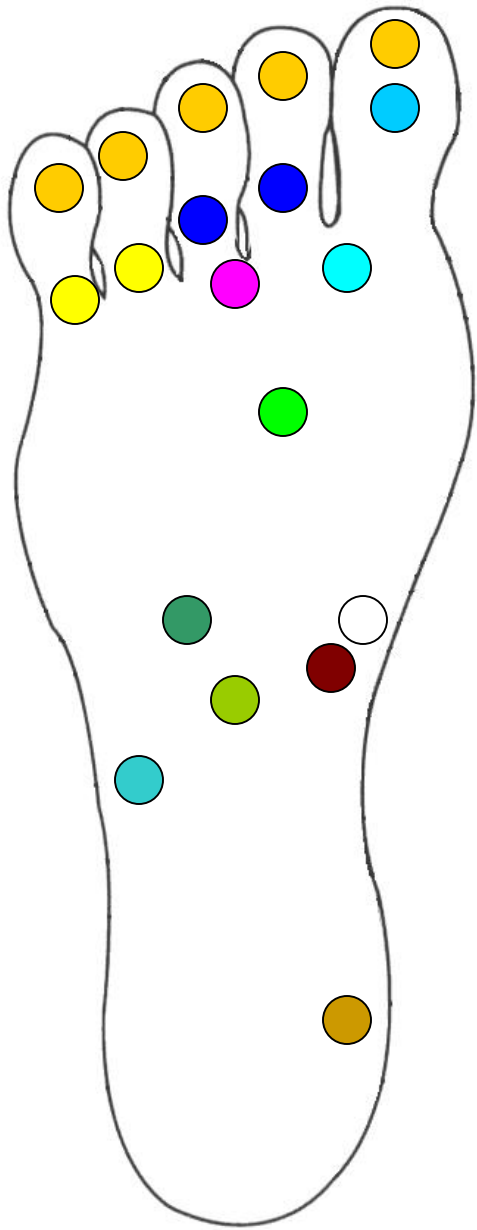


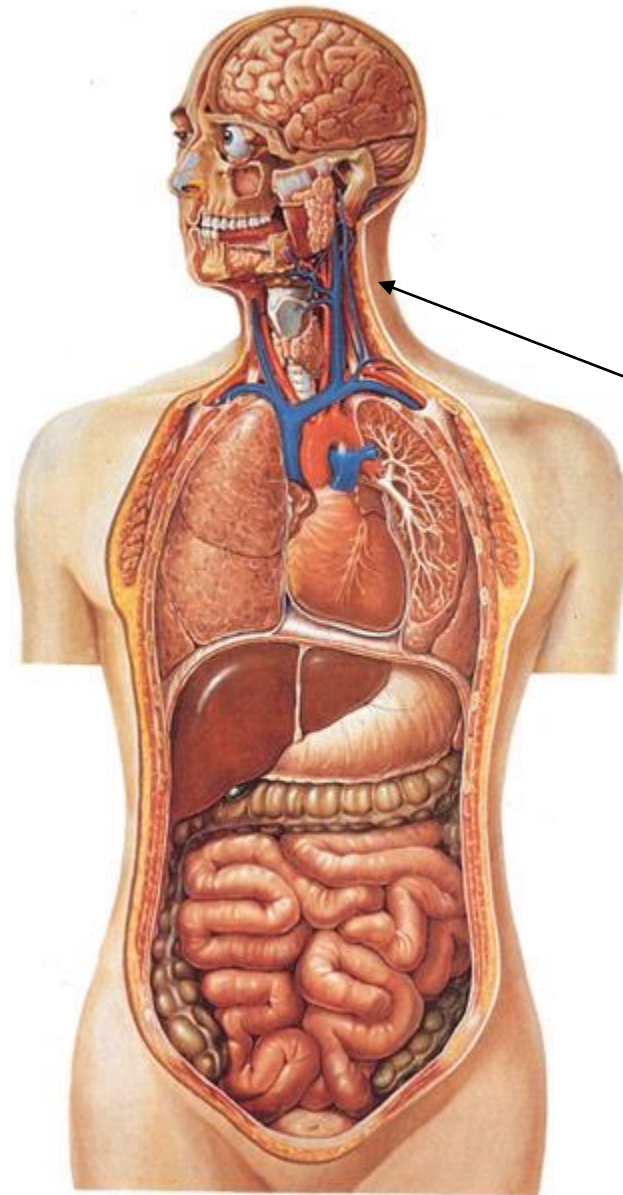
Heart



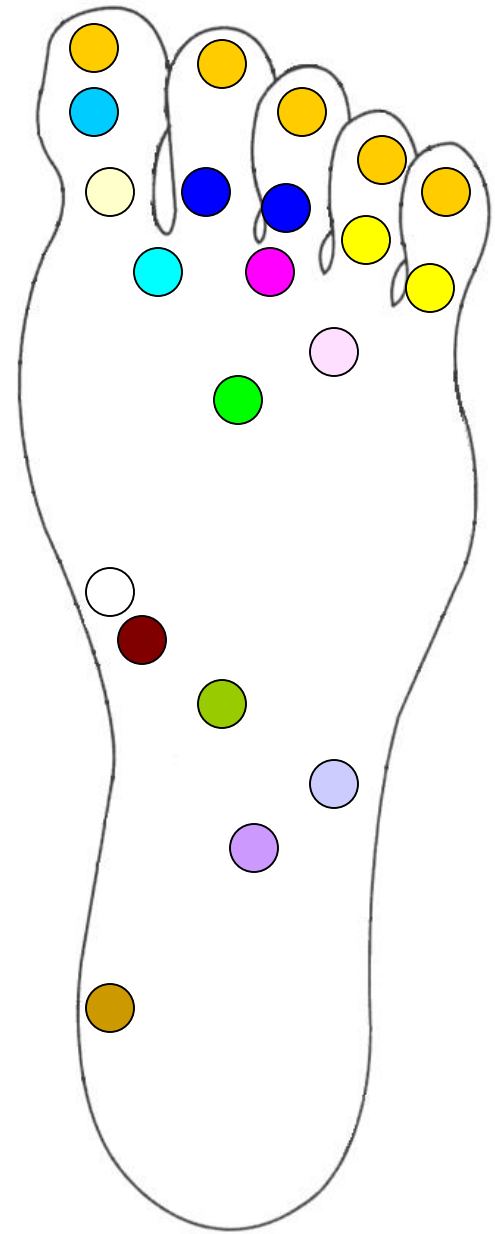
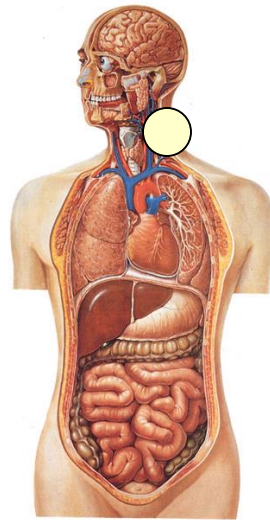
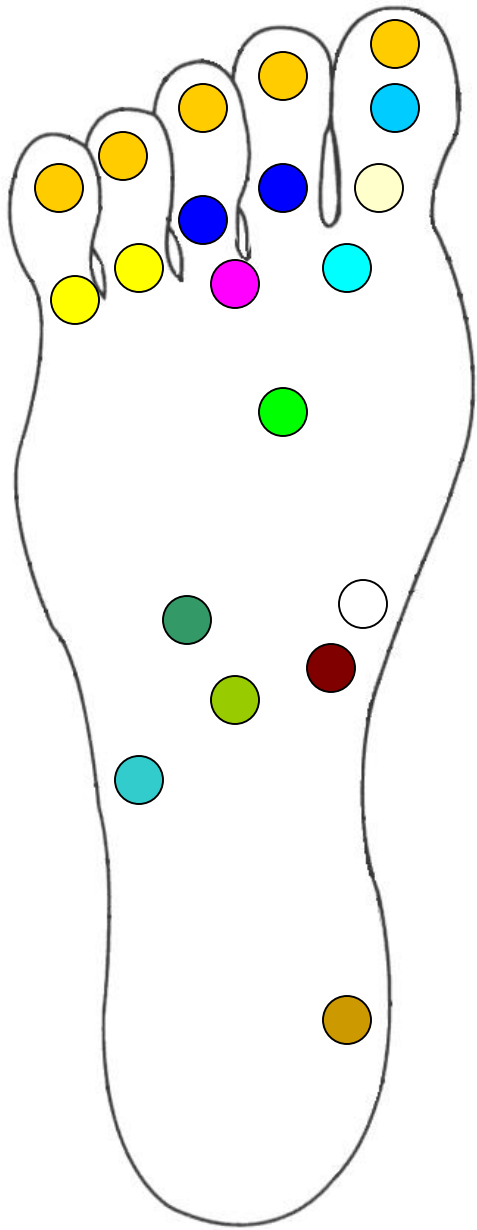


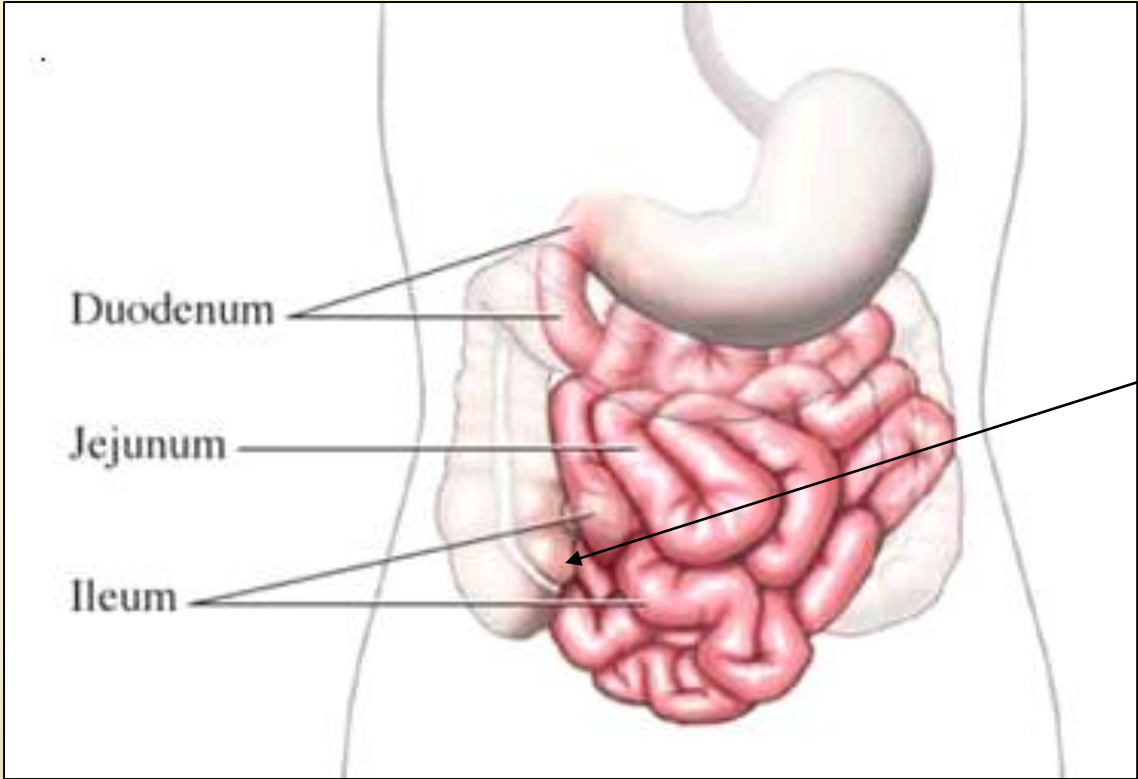
Pituitary





Back of Neck



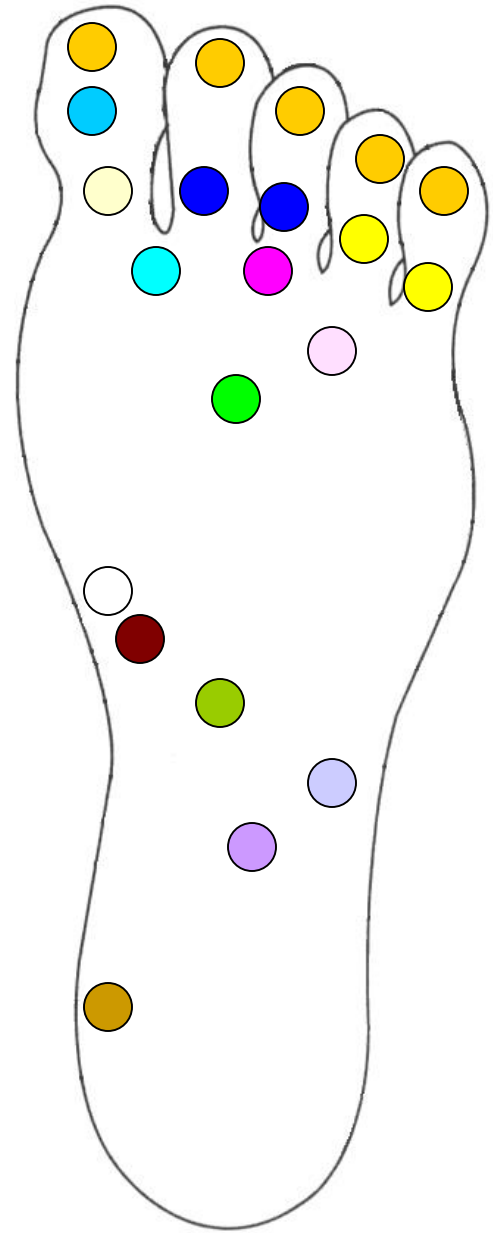
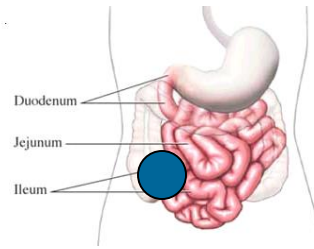
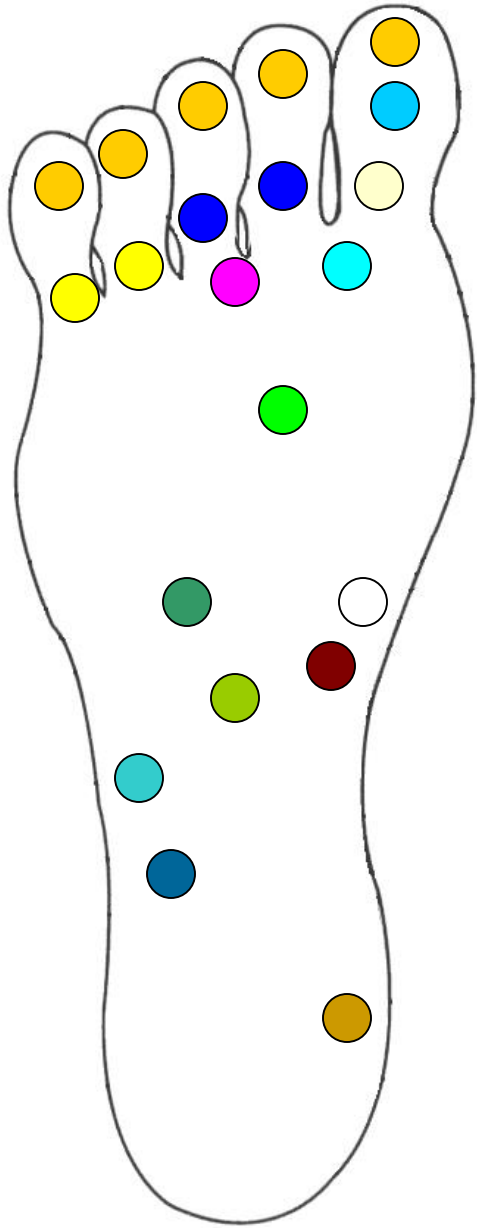


Duodenum

Jejunum

Ileum

Ileo-Cecal Valve



What foot should you start working on and why?

The left foot so you will be able to clear the colon in the correct order.

Which is a contraindication to performing foot reflexology?

Damaged areas such as broken skin on the foot.

What is the amount of pressure to use on a client's foot?

Pressure will vary depending on client's tolerance.

MBLX Review

Plain & Simple Guide to Therapeutic Massage & Bodywork Examinations

The Reproductive System

General Review

1. Gonads refer to _____.
 - a. Ovaries
 - b. Testes
 - c. Both the ovaries and the testes
 - d. Neither the ovaries nor the testes

General Review

2. A chromosome that is not a sex chromosome is called a(n) _____.

a. Genosome

b. Biosome

c. Transome

d. Autosome

General Review

3. Examples of secondary sex characteristics include the _____.

a. Vagina

b. Breasts

c. Uterus

d. None of the above

General Review

4. The most common bacterial sexually transmitted disease is _____.

- a. Syphilis
- b. AIDS
- c. Herpes
- d. Chlamydia

General Review

5. Genital herpes is caused by _____.
- a. Bacteria
 - b. Fungi
 - c. Parasites
 - d. Viruses

General Review

6. The abnormal growth of the fetus somewhere other than the uterus is called a(n) _____.

- a. Ectopic pregnancy
- b. Myopic pregnancy
- c. Endopic pregnancy
- d. Toxemic pregnancy

General Review

7. The pair of structures near the prostate gland that manufacture semen are the _____.

a. Kidneys

b. Seminal vesicles

c. Ureters

d. Lymph vessels

General Review

8. Gametes are produced by _____.
- a. The ovaries
 - b. The testes
 - c. Both the ovaries and the testes
 - d. Neither the ovaries nor the testes

General Review

9. A cell containing all the genetic material is referred to as _____.

- a. Diploid
- b. Haploid
- c. Endoid
- d. None of the above

General Review

10. The onset of menstruation is _____.
- a. Menopause
 - b. Dysmenorrhea
 - c. Menarche
 - d. Amenorrhea

General Review

11. A Bartholin cyst is a cyst in the _____.

a. Vestibular gland

b. Cryptorchism

c. Kidney

d. Ovary

General Review

12. Gestation means _____.
- a. Lactation drying up
 - b. Pregnancy
 - c. The period of time between puberty and pregnancy
 - d. An ectopic pregnancy

General Review

13. The _____ is the uterine opening.

- a. Vagina
- b. Placenta
- c. Vulva
- d. Cervix

General Review

14. The epididymis is a structure that _____.
- a. Stores unfertilized eggs
 - b. Protects amniotic fluid
 - c. Houses the ovaries
 - d. Stores sperm

General Review

15. The lining of the uterus that is expelled during menstruation and regenerates during each cycle is the _____.

a. Corpus cavernosa

b. Ovum

c. Myometrium

d. Endometrium