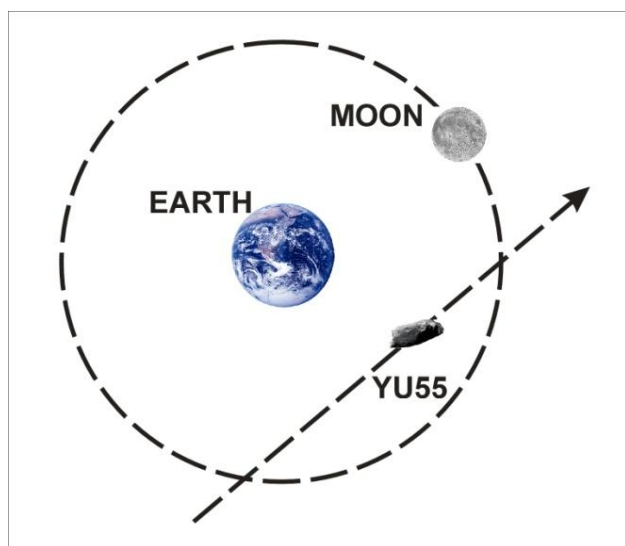




2005 YU55 is on an Earthly Drive-by

Well he is on his way and his name is 2005 YU55¹ according to NASA. With a name like that he must be a boy asteroid! YU55 is barreling towards the Earth at thousands of miles per hour and will arrive here on November 8, 2011 at 11:28 pm, EST.

What makes this visit unique is that YU55 will pass between the orbit of our Moon and the Earth itself, precisely 85% or the Moon's orbit. This is the closest asteroid approach in many years. NASA says that there is nothing to worry about at least for another one hundred years.²



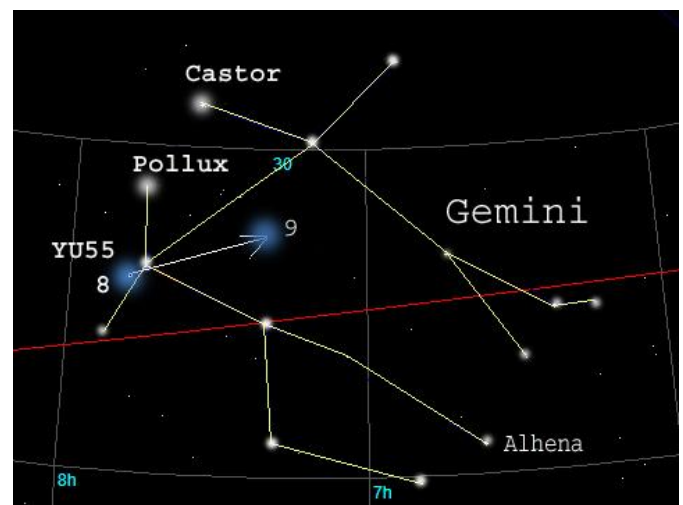
NOVEMBER 8, 2011

Then on November 9, at 7:13 am EST, YU55 will make its closest approach towards our Moon before moving on beyond our Lunar/Earth system. YU55 is 400 meters in size (about 1,300 feet). If he did hit the Earth, it would be like a huge hydrogen bomb going off.³ Being the astronomy geek

that I am, I went to the NASA JPL site where I could get all the data needed so I could plot the YU55's course myself with my astronomy software.⁴ Astronomically and astrologically speaking, I came up with some unique results to say the least.⁵

What Does It Mean Astrologically?

Currently, during the writing of this newsletter, YU55 is approaching the constellation of Gemini (Sidereal). However, when it gets here on November 8 to 9, it will be in conjunction with the stars Pollux and Castor. See the picture below.



Constellation of Gemini, Nov. 8, 2011

The two bright stars of Pollux and Caster are the two heads of the Gemini twins strewn out over the heavenly skies. YU55 will conjunct both of these stars within a twenty four hour period while approaching first the Earth and then the Moon.

Traditional Meanings of Gemini

The two battling brothers' archetype is universal. In the Bible we see the conflict between Cain and Able, Esau and Jacob, to name a few.

The African Zulus claim that people born under this sign are very emotional and sometimes indecisive. They can give their heart to several people.

The Egyptians saw in these two stars the eyes of Horus while the Romans saw the twin brothers Romulus and Remus. Romulus and Remus founded the city of Rome.

The Star Pollux represents the pain of creativity while the star Caster represents the creativity which flows easily without pain and trauma. Thus, they represent the polarity between opposing forces.

Saturn Squares Pollux

On November 8, 2011 transiting Saturn will square Pollux as YU55 passes close to the Earth. Transiting Saturn will also square the 12th house natal Saturn in President Barack Obama's chart! Transiting Saturn will also square the United States natal Venus.

This indicates strong debate between values and ideas on a national and international basis. President Obama and the Congress are most likely going to have a challenging time in resolving the budget debate. Like the two battling brother's of Gemini, a compromise must be found between the warring parties in our Congress.

After looking at the midpoints to Pollux in the United States natal chart there will be unpleasant decisions but with beneficial results (Jupiter + Mars = Saturn and Pollux).

This will most likely be because there will be a bitter taste left in our legislature's mouths because of the compromises that were made on both sides. However, the people will benefit in my opinion.

Final Thoughts

The Masters of Wisdom and Harmony have spoken many times through their emissaries about the coordination between the signs in the heavens and the events upon the Earth. The star of Bethlehem is no exception to this rule either. This is not a denial of freewill, only an example of a carefully chosen and open plan.

If we create a blueprint of the house we want to build, then build it followed by moving into our new house, is it not our free choice to move in or not? I say that it is.

When we are young, the stars rule over us guaranteeing our necessary compliance to our divine contract made before we incarnated into our present life (our blueprint and house). As we grow and mature the stars become our teachers and our friends as we learn our lessons. In the end, if we mature, we rule the stars, which always was the one true goal and purpose.

© *Brian John Piccolo, 2011.*



¹ I call him YU55 for the sake of brevity.

² <http://neo.jpl.nasa.gov/news/news171.html>

³ Some researchers estimate it would be equal to fifteen atom bombs.

⁴

<http://ssd.jpl.nasa.gov/sbdb.cgi?sstr=2005%20YU55;orb=1:co v=1;log=0;cad=1#orb>

⁵ I used: Distance Suns Software, Version 1.3, Virtual Reality Laboratories, Inc., San Luis Obispo, CA 93401.

PAST ISSUES OF THE GRAIL:

- Vol. 1: The Grail, What Is It?
- Vol. 2: Greater Resolution of the Grail
- Vol. 3: Mnemosnye: Goddess of Memory
- Vol. 4: Genesis and Quantum Physics
- Vol. 5: Ancient Chinese Secret: Chi Kong
- Vol. 6: Nidra: Sleep Yoga
- Vol. 7 Overcoming the World like Christ
- Vol. 8 The Question of the New Age
- Vol. 9 The Irony of Ironies
- Vol. 10 The Law of Attraction/Repulsion
- Vol. 11 Phi Ratio and Fractal Geometry
- Vol. 12 DNA and Determinism
- Vol. 13 2012 and the Art of Co-Creation 1
- Vol. 14 2012 and the Art of Co-Creation 2
- Vol. 15 The Mahatmas of and Their Letters
- Vol. 16 Zero-Point Energy
- Vol. 17 Mandala Symbolism
- Vol. 18 Reason for the Season of Christmas
- Vol. 19 What is Initiation?
- Vol. 20 The Three Tenets of Theosophy
- Vol. 21 Waves + Particles = Wavicles
- Vol. 22 The Quantum Eraser Phenomena
- Vol. 23 Morphic Fields & Energy Healing Part 1
- Vol. 24 Morphic Fields & Energy Healing Part 2
- Vol. 25 The Akashic Records
- Vol. 26 Avatar: The Movie
- Vol. 27 Be Ye Perfect
- Vol. 28 A True Bodhisattva
- Vol. 29 The Movement of Hidden Forces
- Vol. 30 The Ten Planets of Astrology
- Vol. 31 Perception is Creation
- Vol. 32 Quantum Healing
- Vol. 33 Tensegrity: What is It?
- Vol. 34 The Universe by Numbers
- Vol. 35 2005 YU55 is on an Earthly Drive-by